

Anti-ethylene-responsive transcription factor 2-like antibody

Catalog: PHY6401S

Product Information

Description:	Rabbit polyclonal antibody
Background:	XP_022890259
Synonyms:	XP_022890259
Immunogen:	KLH-conjugated synthetic peptide (18 aa from Central section) derived from <i>Olea europaea</i> var. <i>sylvestris</i> XP_022890259.
Form:	Lyophilized
Quantity:	150 µg
Purification:	Serum Peptide affinity form antibody available upon request at info@phytoab.com .
Reconstitution:	Reconstitution with 150µl of sterile water. "Note: please spin tube briefly prior to opening it to avoid any losses that might occur from lyophilized material adhering to the cap or sides of the tube".
Stability & Storage:	Use a manual defrost freezer and avoid repeated freeze-thaw cycles. 12 months from date of receipt, -20 to -70°C as supplied. 6 months, -20 to -70°C under sterile conditions after reconstitution. 1 month, 2 to 8°C under sterile conditions after reconstitution.
Shipping:	The product is shipped at 4°C. Upon receipt, store it immediately at the temperature recommended above.

Application Information

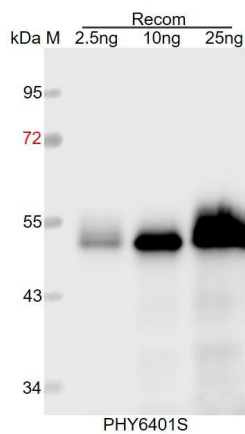
Recommended Dilution:	Western Blot (1:1000-1:2000) Note: Optimal dilutions/concentrations should be determined by the end user.
Expected / apparent MW:	27 kDa
Predicted Reactivity:	Among species analyzed, the sequence of the synthetic peptide used for immunization is 100% homologues with the sequence in <i>Populus trichocarpa</i> , and 80-99% homologues with the sequence in <i>Cucumis sativus</i> , <i>Setaria viridis</i> , <i>Oryza sativa</i> , <i>Panicum virgatum</i> , <i>Sorghum bicolor</i> , <i>Vitis vinifera</i> , <i>Zea mays</i> , <i>Glycine max</i> , <i>Gossypium raimondii</i> ,

Research Use Only

Medicago truncatula, Nicotiana tabacum, Spinacia oleracea, Solanum tuberosum, Solanum lycopersicum, Arabidopsis thaliana, Brassica napus, Brassica rapa, Hordeum vulgare, Triticum aestivum.

For more species homologues information, please contact tech support at tech@phytoab.com.

Application Example



Recom: 2.5 ng, 10 ng and 25 ng recombinant protein containing the peptide for immunization and having a molecular mass of 52 kDa.

Electrophoresis: 12% SDS-PAGE

Transfer: blotting to NC (nitrocellulose) membrane for 1 h.

Blocking: 5% skim milk at RT or 4°C for 1 h.

Primary antibody: 1:1000 dilution overnight at 4°C.

Secondary antibody: 1:10000 dilution using Goat Anti-Rabbit IgG H&L (HRP) (Cat# PHY6000).

Detection: using chemiluminescence substrate and image were captured with CCD camera.