

# Anti-Aquaporin TIP2-1/2/3 antibody

Catalog: PHY3815S

## Product Information

|                                 |   |
|---------------------------------|---|
| <b>Description:</b>             | Rabbit polyclonal antibody  |
| <b>Background:</b>              | TIP2;1/2/3  |
| <b>Synonyms:</b>                | TIP2;1/2/3, TONOPLAST INTRINSIC PROTEIN 2;1/2/3, DELTA-TIP1/2/3   |
| <b>Immunogen:</b>               | KLH-conjugated synthetic peptide (14 aa from C terminal section) derived from <i>Arabidopsis thaliana</i> TIP2;1 (AT3G16240), TIP2;2 (AT5G47450) and TIP2;3 (AT4G37140).  |
| <b>Form:</b>                    | Lyophilized   |
| <b>Quantity:</b>                | 150 µg  |
| <b>Purification:</b>            | Serum<br>Peptide affinity form antibody available upon request at <a href="mailto:info@phytoab.com">info@phytoab.com</a> .  |
| <b>Reconstitution:</b>          | Reconstitution with 150µl of sterile water.<br>"Note: please spin tube briefly prior to opening it to avoid any losses that might occur from lyophilized material adhering to the cap or sides of the tube".  |
| <b>Stability &amp; Storage:</b> | Use a manual defrost freezer and avoid repeated freeze-thaw cycles.<br>12 months from date of receipt, -20 to -70°C as supplied.<br>6 months, -20 to -70°C under sterile conditions after reconstitution.<br>1 month, 2 to 8°C under sterile conditions after reconstitution. |
| <b>Shipping:</b>                | The product is shipped at 4°C. Upon receipt, store it immediately at the temperature recommended above.   |

## Application Information

|                                |   |
|--------------------------------|---|
| <b>Recommended Dilution:</b>   | Western Blot (1:1000-1:2000)<br>Note: Optimal dilutions/concentrations should be determined by the end user.  |
| <b>Expected / apparent MW:</b> | 25 kDa  |
| <b>Predicted Reactivity:</b>   | Among species analyzed, the sequence of the synthetic peptide used for immunization is 100% homologues with the sequence in <i>Oryza sativa</i> , <i>Panicum virgatum</i> , <i>Brassica napus</i> , <i>Brassica rapa</i> , <i>Triticum aestivum</i> , <i>Cucumis sativus</i> , <i>Zea mays</i> , <i>Vitis vinifera</i> , <i>Solanum lycopersicum</i> , <i>Populus trichocarpa</i> , <i>Nicotiana tabacum</i> , <i>Solanum</i> |

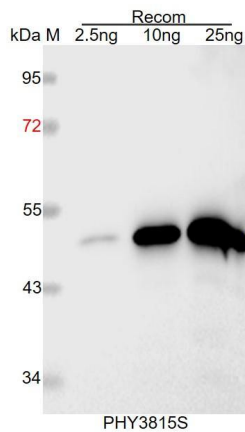
Research Use Only

*tuberosum*, *Gossypium raimondii*, *Sorghum bicolor*, *Medicago truncatula*, *Glycine max*, *Hordeum vulgare*, *Setaria viridis*, *Cucumis sativus*.

The sequence of the synthetic peptide used for immunization is 86% (12 / 14) homologues with the sequence in TIP1;2 (AT3G26520), and TIP1;1 (AT2G36830).

For more species homologues information, please contact tech support at [tech@phytoab.com](mailto:tech@phytoab.com).

## Application Example



Recom: 2.5 ng, 10 ng and 25 ng recombinant protein containing the peptide for immunization and having a molecular mass of 50 kDa.

**Electrophoresis:** 12% SDS-PAGE

**Transfer:** blotting to NC (nitrocellulose) membrane for 1 h.

**Blocking:** 5% skim milk at RT or 4°C for 1 h.

**Primary antibody:** 1:1000 dilution overnight at 4°C.

**Secondary antibody:** 1:10000 dilution using Goat Anti-Rabbit IgG H&L (HRP) (Cat# PHY6000).

**Detection:** using chemiluminescence substrate and image were captured with CCD camera.