

Anti-Peptidyl-prolyl cis-trans isomerase FKBP16-4, chloroplastic antibody

Catalog: PHY2772S

Product Information

Description:	Rabbit polyclonal antibody
Background:	AT3G10060
Synonyms:	AT3G10060, Peptidyl-prolyl cis-trans isomerase FKBP16-4, chloroplastic, PPIase FKBP16-4, FK506-binding protein 16-4, AtFKBP16-4, Immunophilin FKBP16-4, Rotamase, FKBP16-4, FKBP24-2
Immunogen:	KLH-conjugated synthetic peptide (13 aa from Central section) derived from <i>Arabidopsis thaliana</i> AT3G10060.
Form:	Lyophilized
Quantity:	150 µg
Purification:	Serum Peptide affinity form antibody available upon request at info@phytoab.com .
Reconstitution:	Reconstitution with 150 µl of sterile water. "Note: please spin tube briefly prior to opening it to avoid any losses that might occur from lyophilized material adhering to the cap or sides of the tube".
Stability & Storage:	Use a manual defrost freezer and avoid repeated freeze-thaw cycles. 12 months from date of receipt, -20 to -70°C as supplied. 6 months, -20 to -70°C under sterile conditions after reconstitution. 1 month, 2 to 8°C under sterile conditions after reconstitution.
Shipping:	The product is shipped at 4°C. Upon receipt, store it immediately at the temperature recommended above.

Application Information

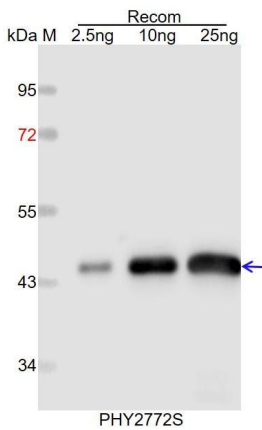
Recommended Dilution:	Western Blot (1:1000-1:2000) Note: Optimal dilutions/concentrations should be determined by the end user.
Expected / apparent MW:	25 kDa
Predicted Reactivity:	Among species analyzed, the sequence of the synthetic peptide used for immunization is 100% homologues with the sequence in <i>Panicum virgatum</i> , and 80-99% homologues with the sequence in <i>Oryza</i>

Research Use Only

sativa, Cucumis sativus, Zea mays, Vitis vinifera, Glycine max, Hordeum vulgare, Medicago truncatula, Populus trichocarpa, Brassica napus, Brassica rapa, Gossypium raimondii, Spinacia oleracea, Sorghum bicolor, Nicotiana tabacum, Solanum tuberosum, Solanum lycopersicum, Setaria viridis, Triticum aestivum, Physcomitrium patens.

For more species homologues information, please contact tech support at tech@phytoab.com.

Application Example



Recom: 2.5 ng, 10 ng and 25 ng recombinant protein containing the peptide for immunization and having a molecular mass of 45 kDa.

Electrophoresis: 12% SDS-PAGE

Transfer: blotting to NC (nitrocellulose) membrane for 1 h.

Blocking: 5% skim milk at RT or 4°C for 1 h.

Primary antibody: 1:1000 dilution overnight at 4°C.

Secondary antibody: 1:10000 dilution using Goat Anti-Rabbit IgG H&L (HRP) (Cat# PHY6000).

Detection: using chemiluminescence substrate and image were captured with CCD camera.