

Anti-UDP-glucose pyrophosphorylase antibody

Catalog: PHY2552S

Product Information

Description:	Rabbit polyclonal antibody
Background:	UDP-glucose pyrophosphorylase (UGPase) is an ubiquitous enzyme found in plants, animals and bacteria, and produces UDP-glucose which is the major glycosyl donor for polysaccharides in all organisms (e.g. needed for sucrose synthesis, but also for cellulose and callose formation, and as a precursor to other nucleotide-sugars).
Synonyms:	UGPase
Immunogen:	KLH-conjugated synthetic peptide (18 aa from Central section) derived from <i>Arabidopsis thaliana</i> UGP1 (AT3G03250) and UGP2 (AT5G17310).
Form:	Lyophilized
Quantity:	150 µg
Purification:	Serum Peptide affinity form antibody available upon request at info@phytoab.com .
Reconstitution:	Reconstitution with 150µl of sterile water. "Note: please spin tube briefly prior to opening it to avoid any losses that might occur from lyophilized material adhering to the cap or sides of the tube".
Stability & Storage:	Use a manual defrost freezer and avoid repeated freeze-thaw cycles. 12 months from date of receipt, -20 to -70°C as supplied. 6 months, -20 to -70°C under sterile conditions after reconstitution. 1 month, 2 to 8°C under sterile conditions after reconstitution.
Shipping:	The product is shipped at 4°C. Upon receipt, store it immediately at the temperature recommended above.

Application Information

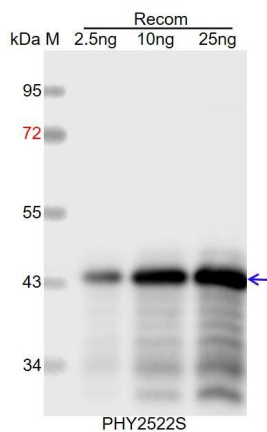
Recommended Dilution:	Western Blot (1:1000-1:2000) Note: Optimal dilutions/concentrations should be determined by the end user.
Expected / apparent MW:	52 kDa
Predicted Reactivity:	Among species analyzed, the sequence of the synthetic peptide used for immunization is 100% homologues with the sequence in <i>Brassica</i>

Research Use Only

napus, Brassica rapa, Panicum virgatum, Zea mays, Gossypium raimondii, Solanum tuberosum, Solanum lycopersicum, Sorghum bicolor, Nicotiana tabacum, Cucumis sativus, Physcomitrium patens, Tritifcum aestivum, Glycine max, Oryza sativa, Vitis vinifera.

For more species homologues information, please contact tech support at tech@phytoab.com.

Application Example



Recom: 2.5 ng, 10 ng and 25 ng recombinant protein containing the peptide for immunization and having a molecular mass of 44 kDa.

Electrophoresis: 12% SDS-PAGE

Transfer: blotting to NC (nitrocellulose) membrane for 1 h.

Blocking: 5% skim milk at RT or 4°C for 1 h.

Primary antibody: 1:1000 dilution overnight at 4°C.

Secondary antibody: 1:10000 dilution using Goat Anti-Rabbit IgG H&L (HRP) (Cat# PHY6000).

Detection: using chemiluminescence substrate and image were captured with CCD camera.