

Anti-Cyanophycin synthetase antibody

Catalog: PHY5375S

Product Information

Description:	Rabbit polyclonal antibody
Background:	cphA
Synonyms:	cphA
Immunogen:	KLH-conjugated synthetic peptide (18 aa from N terminal section) derived from <i>Synechocystis sp.</i> PCC 6803 cphA (slr2002).
Form:	Lyophilized
Quantity:	150 µg
Purification:	Serum
	Peptide affinity form antibody available upon request at info@phytoab.com .
Reconstitution:	Reconstitution with 150 µl of sterile water. "Note: please spin tube briefly prior to opening it to avoid any losses that might occur from lyophilized material adhering to the cap or sides of the tube".
Stability & Storage:	Use a manual defrost freezer and avoid repeated freeze-thaw cycles.
	12 months from date of receipt, -20 to -70°C as supplied.
	6 months, -20 to -70°C under sterile conditions after reconstitution.
	1 month, 2 to 8°C under sterile conditions after reconstitution.
Shipping:	The product is shipped at 4°C. Upon receipt, store it immediately at the temperature recommended above.

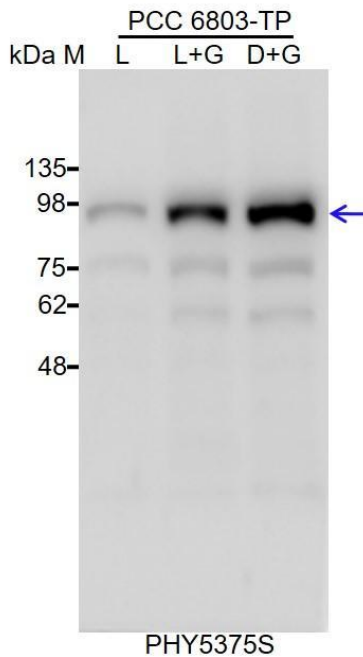
Application Information

Recommended Dilution:	Western Blot (1:1000-1:2000) Note: Optimal dilutions/concentrations should be determined by the end user.
Expected / apparent MW:	95 kDa
Confirmed Reactivity:	<i>Synechocystis sp.</i> PCC 6803
Predicted Reactivity:	For homologues with other species especially algae, please contact tech support at tech@phytoab.com .

Research Use Only

Application Example

Example1:



PCC 6803+L: 30 µg whole-cell lysate protein from WT of *Synechocystis* sp. PCC 6803 (Light without Glucose).

PCC 6803+L/G: 30 µg whole-cell lysate protein from WT of *Synechocystis* sp. PCC 6803 (Light Plus Glucose).

PCC6803+G: 30 µg whole-cell lysate protein from WT of *Synechocystis* sp. PCC 6803 (Dark Plus Glucose).

Electrophoresis: (5-20)% Gradient gel

Transfer: blotting to NC (nitrocellulose) membrane for 1 h.

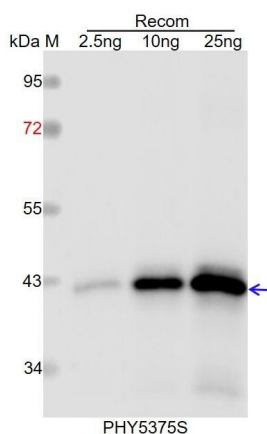
Blocking: 5% skim milk at RT or 4°C for 1 h.

Primary antibody: 1:1000 dilution overnight at 4°C.

Secondary antibody: 1:10000 dilution using Goat Anti-Rabbit IgG H&L (HRP) (Cat# PHY6000).

Detection: using chemiluminescence substrate and image were captured with CCD camera.

Example2:



Recom: 2.5 ng, 10 ng and 25 ng recombinant protein containing the peptide for immunization and having a molecular mass of 42 kDa.

Electrophoresis: 12% SDS-PAGE

Transfer: blotting to NC (nitrocellulose) membrane for 1 h.

Blocking: 5% skim milk at RT or 4°C for 1 h.

Primary antibody: 1:1000 dilution overnight at 4°C.

Secondary antibody: 1:10000 dilution using Goat Anti-Rabbit IgG H&L (HRP) (Cat# PHY6000).

Detection: using chemiluminescence substrate and image were captured with CCD camera.