

Anti-U-box domain-containing protein 26 antibody

Catalog: PHY3758S

Product Information

Description:	Rabbit polyclonal antibody
Background:	PUB26 and PUB25 are closely related paralogs that are functional E3 ligases. They function in immune response pathway by targeting BIK1 for degradation.
Synonyms:	PUB26, PUB26PLANT U-BOX 26
Immunogen:	KLH-conjugated synthetic peptide (13 aa from N terminal section) derived from <i>Arabidopsis thaliana</i> PUB26 (AT1G49780).
Form:	Lyophilized
Quantity:	150 µg
Purification:	Serum Peptide affinity form antibody available upon request at info@phytoab.com .
Reconstitution:	Reconstitution with 150 µl of sterile water. "Note: please spin tube briefly prior to opening it to avoid any losses that might occur from lyophilized material adhering to the cap or sides of the tube".
Stability & Storage:	Use a manual defrost freezer and avoid repeated freeze-thaw cycles. 12 months from date of receipt, -20 to -70°C as supplied. 6 months, -20 to -70°C under sterile conditions after reconstitution. 1 month, 2 to 8°C under sterile conditions after reconstitution.
Shipping:	The product is shipped at 4°C. Upon receipt, store it immediately at the temperature recommended above.

Application Information

Recommended Dilution:	Western Blot (1:1000-1:2000) Note: Optimal dilutions/concentrations should be determined by the end user.
Expected / apparent MW:	46 kDa
Predicted Reactivity:	Among species analyzed, the sequence of the synthetic peptide used for immunization is 100% homologues with the sequence in <i>Brassica napus</i> , <i>Brassica rapa</i> , <i>Solanum lycopersicum</i> , and 80-99% homologues with the sequence in <i>Vitis vinifera</i> , <i>Nicotiana tabacum</i> ,

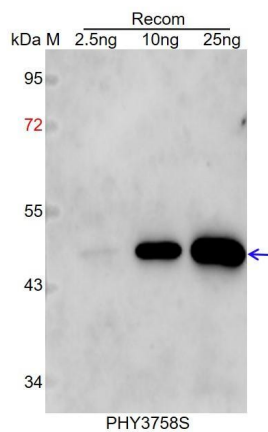
Research Use Only

Populus trichocarpa, *Spinacia oleracea*, *Cucumis sativus*,
Gossypium raimondii, *Glycine max*.

The sequence of the synthetic peptide used for immunization is 85%
(11 / 13) homologues with the sequence in PUB25 (AT3G19380).

For more species homologues information, please contact tech
support at tech@phytoab.com.

Application Example



Recom: 2.5 ng, 10 ng and 25 ng recombinant protein containing the peptide
for immunization and having a molecular mass of 48 kDa.

Electrophoresis: 12% SDS-PAGE

Transfer: blotting to NC (nitrocellulose) membrane for 1 h.

Blocking: 5% skim milk at RT or 4°C for 1 h.

Primary antibody: 1:1000 dilution overnight at 4°C.

Secondary antibody: 1:10000 dilution using Goat Anti-Rabbit IgG H&L (HRP)
(Cat# PHY6000).

Detection: using chemiluminescence substrate and image were captured with
CCD camera.