

Anti-RHO-RELATED PROTEIN FROM PLANTS 1/2/3/4/5 antibody

Catalog: PHY2168S

Product Information

Description:	Rabbit polyclonal antibody
Background:	There are 11 ROP proteins in <i>Arabidopsis</i> that act as vital molecular switches in a number of cellular processes, including polar growth of pollen tubes, cell elongation during organogenesis, interdigitated growth of pavement cells and polar auxin transport.
Synonyms:	ROP1/2/3/4/5
Immunogen:	KLH-conjugated synthetic peptide (15 aa from Central section) derived from <i>Arabidopsis thaliana</i> ROP2 (AT1G20090), ROP4 (AT1G75840), ROP3 (AT2G17800), ROP1 (AT3G51300), ROP5 (AT4G35950).
Form:	Lyophilized
Quantity:	150 µg
Purification:	Serum Peptide affinity form antibody available upon request at info@phytoab.com .
Reconstitution:	Reconstitution with 150 µl of sterile water. "Note: please spin tube briefly prior to opening it to avoid any losses that might occur from lyophilized material adhering to the cap or sides of the tube".
Stability & Storage:	Use a manual defrost freezer and avoid repeated freeze-thaw cycles. 12 months from date of receipt, -20 to -70°C as supplied. 6 months, -20 to -70°C under sterile conditions after reconstitution. 1 month, 2 to 8°C under sterile conditions after reconstitution.
Shipping:	The product is shipped at 4°C. Upon receipt, store it immediately at the temperature recommended above.

Application Information

Recommended Dilution:	Western Blot (1:1000-1:2000) Note: Optimal dilutions/concentrations should be determined by the end user.
Expected / apparent MW:	22 kDa (AT1G20090, AT1G75840, AT2G17800, AT3G51300, AT4G35950), 71 kDa (AT3G51290)

Research Use Only

Confirmed Reactivity:

Arabidopsis thaliana

Predicted Reactivity:

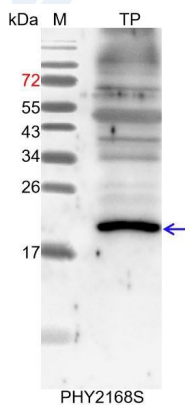
Among species analyzed, the sequence of the synthetic peptide used for immunization is 100% homologues with the sequence in *Brassica napus*, *Brassica napus*, *Vitis vinifera*, *Populus trichocarpa*, *Glycine max*, *Nicotiana tabacum*, *Cucumis sativus*, *Solanum lycopersicum*, *Spinacia oleracea*, and 80-99% homologues with the sequence in *Hordeum vulgare*, *Gossypium raimondii*, *Panicum virgatum*, *Zea mays*, *Medicago truncatula*.

The sequence of the synthetic peptide used for immunization is 100 % homologues with the sequence in APSR1 (AT3G51290).

For more species homologues information, please contact tech support at tech@phytoab.com.

Application Example

Example 1:



TP: 18 µg total protein from *Arabidopsis thaliana*.

Electrophoresis: 15% SDS-PAGE

Transfer: blotting to NC (nitrocellulose) membrane for 1 h.

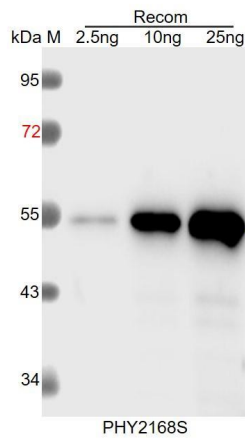
Blocking: 5% skim milk at RT or 4°C for 1 h.

Primary antibody: 1:1000 dilution overnight at 4°C.

Secondary antibody: 1:10000 dilution using Goat Anti-Rabbit IgG H&L (HRP) (Cat# PHY6000).

Detection: using chemiluminescence substrate and image were captured with CCD camera.

Example2:



Recom: 2.5 ng, 10 ng and 25 ng recombinant protein containing the peptide for immunization and having a molecular mass of 54 kDa.

Electrophoresis: 12% SDS-PAGE

Transfer: blotting to NC (nitrocellulose) membrane for 1 h.

Blocking: 5% skim milk at RT or 4°C for 1 h.

Primary antibody: 1:1000 dilution overnight at 4°C.

Secondary antibody: 1:10000 dilution using Goat Anti-Rabbit IgG H&L (HRP) (Cat# PHY6000).

Detection: using chemiluminescence substrate and image were captured with CCD camera.