

Anti-Serrate RNA effector molecule, C-terminal antibody

Catalog: PHY0200S

Product Information

Description:	Rabbit polyclonal antibody
Background:	SE is a single zinc finger containing protein that is expressed in meristems and organ primordia. Further analysis of the single loss of function allele indicated pleiotropic effects extending to many aspects of shoot development such as taller meristems, alterations in phase transition, phyllotaxy and branching.
Synonyms:	SE, SERRATE
Immunogen:	KLH-conjugated synthetic peptide of SE derived from <i>Arabidopsis thaliana</i> AT2G27100.
Form:	Lyophilized
Quantity:	150 µg
Purification:	Serum
Reconstitution:	Peptide affinity form antibody available upon request at info@phytoab.com . Reconstitution with 150 µl of sterile water. "Note: please spin tube briefly prior to opening it to avoid any losses that might occur from lyophilized material adhering to the cap or sides of the tube".
Stability & Storage:	Use a manual defrost freezer and avoid repeated freeze-thaw cycles. 12 months from date of receipt, -20 to -70°C as supplied. 6 months, -20 to -70°C under sterile conditions after reconstitution. 1 month, 2 to 8°C under sterile conditions after reconstitution.
Shipping:	The product is shipped at 4°C. Upon receipt, store it immediately at the temperature recommended above.

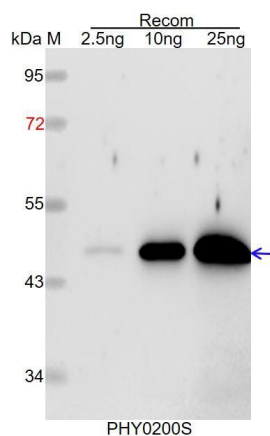
Application Information

Recommended Dilution:	Western Blot (1:1000-1:2000) Note: Optimal dilutions/concentrations should be determined by the end user.
Expected / apparent MW:	81 kDa
Predicted Reactivity:	Among species analyzed, the sequence of the synthetic peptide used for immunization is 100% homologues with the sequence in <i>Vitis</i>

Research Use Only

vinifera, *Spinacia oleracea*, *Nicotiana tabacum*, *Solanum lycopersicum*, *Gossypium raimondii*, *Brassica rapa*, *Brassica napus*, and 80-99% homologues with the sequence in *Cucumis sativus*, *Populus trichocarpa*, *Glycine max*, *Medicago truncatula*, *Setaria viridis*, *Sorghum bicolor*, *Zea mays*, *Panicum virgatum*, *Populus trichocarpa*, *Oryza sativa*, *Triticum aestivum*, *Hordeum vulgare*. For more species homologues information, please contact tech support at tech@phytoab.com.

Application Example



Recom: 2.5 ng, 10 ng and 25 ng recombinant protein containing the peptide for immunization and having a molecular mass of 48 kDa.

Electrophoresis: 12% SDS-PAGE

Transfer: blotting to NC (nitrocellulose) membrane for 1 h.

Blocking: 5% skim milk at RT or 4°C for 1 h.

Primary antibody: 1:1000 dilution overnight at 4°C.

Secondary antibody: 1:10000 dilution using Goat Anti-Rabbit IgG H&L (HRP) (Cat# PHY6000).

Detection: using chemiluminescence substrate and image were captured with CCD camera.