

# Anti-Superoxide dismutase [Cu-Zn] 1, C-terminal antibody

Catalog: PHY2872S

## Product Information

<b>Description:</b>	Rabbit polyclonal antibody
<b>Background:</b>	CSD1 encodes a cytosolic copper/zinc superoxide dismutase that can detoxify superoxide radicals. Its expression is affected by miR398-directed mRNA cleavage. And CSD1 is regulated by biotic and abiotic stress. Activation of CSD1 in the cytoplasm involves both a CCS-dependent and -independent pathway.
<b>Synonyms:</b>	CSD1, ATSOD1, COPPER/ZINC SUPEROXIDE DISMUTASE 1, SOD1, SUPEROXIDE DISMUTASE 1
<b>Immunogen:</b>	KLH-conjugated synthetic peptide (16 aa from C terminal section) derived from <i>Arabidopsis thaliana</i> CSD1 (AT1G08830).
<b>Form:</b>	Lyophilized
<b>Quantity:</b>	150 µg
<b>Purification:</b>	Serum Peptide affinity form antibody available upon request at <a href="mailto:info@phytoab.com">info@phytoab.com</a> .
<b>Reconstitution:</b>	Reconstitution with 150 µl of sterile water. "Note: please spin tube briefly prior to opening it to avoid any losses that might occur from lyophilized material adhering to the cap or sides of the tube".
<b>Stability &amp; Storage:</b>	Use a manual defrost freezer and avoid repeated freeze-thaw cycles. 12 months from date of receipt, -20 to -70°C as supplied. 6 months, -20 to -70°C under sterile conditions after reconstitution. 1 month, 2 to 8°C under sterile conditions after reconstitution.
<b>Shipping:</b>	The product is shipped at 4°C. Upon receipt, store it immediately at the temperature recommended above.

## Application Information

<b>Recommended Dilution:</b>	Western Blot (1:1000-1:4000) Note: Optimal dilutions/concentrations should be determined by the end user.
<b>Expected / apparent MW:</b>	15 kDa

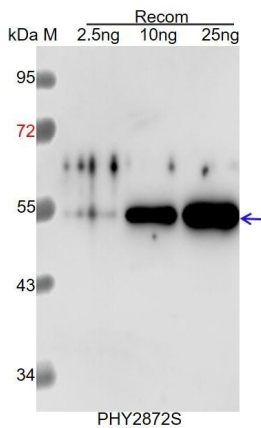
Research Use Only

### Predicted Reactivity:

Among species analyzed, the sequence of the synthetic peptide used for immunization is 100% homologues with the sequence in *Brassica napus*, *Brassica rapa*, *Oryza sativa*, *Zea mays*, *Gossypium raimondii*, *Physcomitrium patens*, *Vitis vinifera*, *Solanum tuberosum*, *Panicum virgatum*, *Sorghum bicolor*, *Populus trichocarpa*, *Cucumis sativus*, *Solanum lycopersicum*, *Medicago truncatula*, *Setaria viridis*, *Nicotiana tabacum*, *Glycine max*, and 80-99% homologues with the sequence in *Spinacia oleracea*.

For more species homologues information, please contact tech support at [tech@phytoab.com](mailto:tech@phytoab.com).

### Application Example



Recom: 2.5 ng, 10 ng and 25 ng recombinant protein containing the peptide for immunization and having a molecular mass of 55 kDa.

**Electrophoresis:** 12% SDS-PAGE

**Transfer:** blotting to NC (nitrocellulose) membrane for 1 h.

**Blocking:** 5% skim milk at RT or 4°C for 1 h.

**Primary antibody:** 1:1000 dilution overnight at 4°C.

**Secondary antibody:** 1:10000 dilution using Goat Anti-Rabbit IgG H&L (HRP) (Cat# PHY6000).

**Detection:** using chemiluminescence substrate and image were captured with CCD camera.