

Anti-50S ribosomal protein L27 antibody

Catalog: PHY3081S

Product Information

Description:	Rabbit polyclonal antibody
Background:	Ribosomal protein large subunit 27 (RPL27) is the structural constituent of ribosome, and it involves in translation.
Synonyms:	RPL27, PRPL27, RIBOSOMAL PROTEIN LARGE SUBUNIT 27.
Immunogen:	KLH-conjugated synthetic peptide (16 aa from C terminal section) derived from <i>Arabidopsis thaliana</i> RPL27 (AT5G40950).
Form:	Lyophilized
Quantity:	150 µg
Purification:	Serum
	Peptide affinity form antibody available upon request at info@phytoab.com .
Reconstitution:	Reconstitution with 150 µl of sterile water. "Note: please spin tube briefly prior to opening it to avoid any losses that might occur from lyophilized material adhering to the cap or sides of the tube".
Stability & Storage:	Use a manual defrost freezer and avoid repeated freeze-thaw cycles. 12 months from date of receipt, -20 to -70°C as supplied. 6 months, -20 to -70°C under sterile conditions after reconstitution. 1 month, 2 to 8°C under sterile conditions after reconstitution.
Shipping:	The product is shipped at 4°C. Upon receipt, store it immediately at the temperature recommended above.

Application Information

Recommended Dilution:	Western Blot (1:1000-1:4000) Note: Optimal dilutions/concentrations should be determined by the end user.
Expected / apparent MW:	22 / 16 kDa
Confirmed Reactivity:	<i>Arabidopsis thaliana</i>
Predicted Reactivity:	Among species analyzed, the sequence of the synthetic peptide used for immunization is 100% homologues with the sequence in <i>Hordeum vulgare</i> , <i>Spinacia oleracea</i> , <i>Populus trichocarpa</i> , <i>Triticum aestivum</i> , and 80-99% homologues with the sequence in <i>Cucumis sativus</i> ,

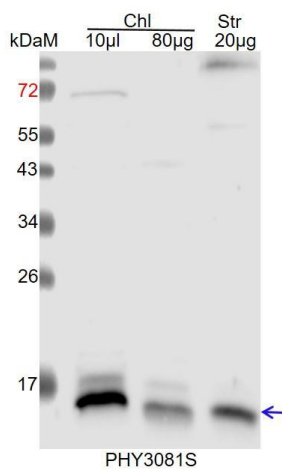
Research Use Only

Sorghum bicolor, *Zea mays*, *Oryza sativa*, *Setaria viridis*, *Panicum virgatum*, *Gossypium raimondii*, *Nicotiana tabacum*, *Solanum lycopersicum*, *Solanum tuberosum*, *Brassica rapa*, *Brassica napus*, *Glycine max*.

For more species homologues information, please contact tech support at tech@phytoab.com.

Application Example

Example1:



Chl: 10 µl and 80 µg total chloroplast protein from *Arabidopsis thaliana*, respectively.

Str: 20 µg stromal protein from *Arabidopsis thaliana*.

Electrophoresis: 15% SDS-PAGE

Transfer: blotting to NC (nitrocellulose) membrane for 1 h.

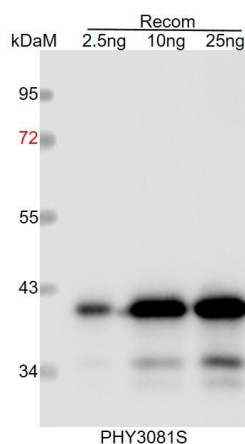
Blocking: 5% skim milk at RT or 4°C for 1 h.

Primary antibody: 1:4000 dilution overnight at 4°C.

Secondary antibody: 1:10000 dilution using Goat Anti-Rabbit IgG H&L(HRP) (Cat# PHY6000).

Detection: using chemiluminescence substrate and image were captured with CCD camera.

Example2:



Recom: 2.5 ng, 10 ng and 25 ng recombinant protein containing the peptide for immunization and having a molecular mass of 40 kDa.

Electrophoresis: 12% SDS-PAGE

Transfer: blotting to NC (nitrocellulose) membrane for 1 h.

Blocking: 5% skim milk at RT or 4°C for 1 h.

Primary antibody: 1:1000 dilution overnight at 4°C.

Secondary antibody: 1:10000 dilution using Goat Anti-Rabbit IgG H&L (HRP) (Cat# PHY6000).

Detection: using chemiluminescence substrate and image were captured with CCD camera.

