

Anti-MAINTENANCE OF PSII UNDER HIGH LIGHT 1 antibody

Catalog: PHY1234A

Product Information

| | |
|---------------------------------|--|
| Description: | Rabbit polyclonal antibody |
| Background: | MPH1 is an integral thylakoid membrane protein that interacts with PSII core complexes and contributes to the maintenance of PSII homeostasis upon exposure to photoinhibitory light conditions by participating in the protection and stabilization of PSII under photoinhibitory stress. |
| Synonyms: | MPH1, MAINTENANCE OF PSII UNDER HIGH LIGHT 1. |
| Immunogen: | KLH-conjugated synthetic peptide (15 aa from Central section) derived from <i>Arabidopsis thaliana</i> MPH1 (AT5G07020). |
| Form: | Lyophilized |
| Quantity: | 150 µg |
| Purification: | Immunogen affinity purified |
| Reconstitution: | Reconstitution with 150 µl of 0.01 M sterile PBS "Note: please spin tube briefly prior to opening it to avoid any losses that might occur from lyophilized material adhering to the cap or sides of the tube". |
| Stability & Storage: | Use a manual defrost freezer and avoid repeated freeze-thaw cycles. 12 months from date of receipt, -20 to -70°C as supplied. 6 months, -20 to -70°C under sterile conditions after reconstitution. 1 month, 2 to 8°C under sterile conditions after reconstitution. |
| Shipping: | The product is shipped at 4°C. Upon receipt, store it immediately at the temperature recommended above. |

Application Information

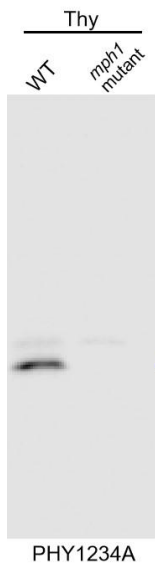
| | |
|--------------------------------|---|
| Recommended Dilution: | Western Blot (1:1000-1:2000) Note: Optimal dilutions/concentrations should be determined by the end user. |
| Expected / apparent MW: | 24 kDa |
| Confirmed Reactivity: | <i>Arabidopsis thaliana</i> |
| Predicted Reactivity: | Among species analyzed, the sequence of the synthetic peptide used for immunization is 80-99% homologues with the sequence in |

Research Use Only

Brassica rapa, *Brassica napus*.

For more species homologues information, please contact tech support at tech@phytoab.com.

Application Example



Thy-WT: thylakoid membrane protein from *Arabidopsis thaliana* containing 0.5 µg of chlorophyll.

Thy-*mph1* mutant: thylakoid membrane protein from a *mph1* mutant of *Arabidopsis thaliana* containing 0.5 µg of chlorophyll.

Electrophoresis: 15% SDS-Urea-PAGE

Transfer: blotting to NC (nitrocellulose) membrane for 1 h.

Blocking: 5% skim milk at RT or 4°C for 1 h.

← **Primary antibody:** 1:1000 dilution overnight at 4°C.

Secondary antibody: 1:10000 dilution using Goat Anti-Rabbit IgG

H&L(HRP) (Cat# PHY6000).

Detection: using chemiluminescence substrate and image were captured with CCD camera.