

Anti-Citrate synthase 2/3, peroxisomal antibody

Catalog: PHY1525A

Product Information

Description:	Rabbit polyclonal antibody
Background:	CSY is required for the fatty acid respiration in seedlings, citrate being exported from peroxisomes into mitochondria during respiration of triacylglycerol (TAG). And CSY is also a key enzyme of the glyoxylate cycle. In <i>Arabidopsis</i> , CSY protein is including CSY1 (AT3G58740), CSY2 (AT3G58750) and CSY3 (AT2G42790).
Synonyms:	CSY2/3, CITRATE SYNTHASE 2/3
Immunogen:	KLH-conjugated synthetic peptide (15 aa from C terminal section) derived from <i>Arabidopsis thaliana</i> CSY2 (AT3G58750) and CSY3 (AT2G42790).
Form:	Lyophilized
Quantity:	150 µg
Purification:	Immunogen affinity purified
Reconstitution:	Reconstitution with 150 µl of 0.01 M sterile PBS. "Note: please spin tube briefly prior to opening it to avoid any losses that might occur from lyophilized material adhering to the cap or sides of the tube".
Stability & Storage:	Use a manual defrost freezer and avoid repeated freeze-thaw cycles. 12 months from date of receipt, -20 to -70°C as supplied. 6 months, -20 to -70°C under sterile conditions after reconstitution. 1 month, 2 to 8°C under sterile conditions after reconstitution.
Shipping:	The product is shipped at 4°C. Upon receipt, store it immediately at the temperature recommended above.

Application Information

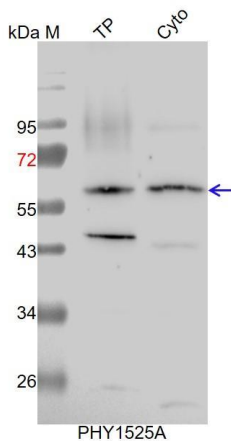
Recommended Dilution:	Western Blot (1:1000-1:2000) Note: Optimal dilutions/concentrations should be determined by the end user.
Expected / apparent MW:	56 kDa
Predicted Reactivity:	Among species analyzed, the sequence of the synthetic peptide used for immunization is 100% homologues with the sequence in <i>Brassica napus</i> , <i>Brassica rapa</i> , <i>Oryza sativa</i> , <i>Vitis vinifera</i> , <i>Cucumis sativus</i> ,

Research Use Only

Gossypium raimondii, *Solanum tuberosum*, *Nicotiana tabacum*, *Solanum lycopersicum*, *Populus trichocarpa*, *Hordeum vulgare*, *Sorghum bicolor*, *Triticum aestivum*, *Panicum virgatum*, *Setaria viridis*, and 80-99% homologues with the sequence in *Spinacia oleracea*, *Physcomitrium patens*, *Zea mays*, *Glycine max*, *Medicago truncatula*.

For more species homologues information, please contact tech support at tech@phytoab.com.

Application Example



TP: 20 µg total protein from *Arabidopsis thaliana*.

Cyto: 30 µl cytosolic protein from *Arabidopsis thaliana*.

Electrophoresis: 15% SDS-PAGE

Transfer: blotting to NC (nitrocellulose) membrane for 1 h.

Blocking: 5% skim milk at RT or 4°C for 1 h.

Primary antibody: 1:2000 dilution overnight at 4°C.

Secondary antibody: 1:10000 dilution using Goat Anti-Rabbit IgG H&L(HRP) (Cat# PHY6000).

Detection: using chemiluminescence substrate and image were captured with CCD camera.