

Anti-PsbL subunit of Photosystem II, N-terminal antibody

Catalog: PHY3227A

Product Information

Description:	Rabbit polyclonal antibody
Background:	PsbL is a subunit of Photosystem II. This subunit has a molecular mass of 4.5kDa and localized at the monomer-monomer interface of Photosystem II. PsbL consists of a single membrane-spanning domain and seems to be required for normal functioning at the QA site.
Synonyms:	PsbL, PHOTOSYSTEM II REACTION CENTER PROTEIN L
Immunogen:	KLH-conjugated synthetic peptide of (14 aa from N terminal section) derived from <i>Arabidopsis thaliana</i> PsbL (ATCG00560).
Form:	Lyophilized
Quantity:	150 µg
Purification:	Immunogen affinity purified
Reconstitution:	Reconstitution with 150 µl of 0.01 M sterile PBS. "Note: please spin tube briefly prior to opening it to avoid any losses that might occur from lyophilized material adhering to the cap or sides of the tube".
Stability & Storage:	Use a manual defrost freezer and avoid repeated freeze-thaw cycles. 12 months from date of receipt, -20 to -70°C as supplied. 6 months, -20 to -70°C under sterile conditions after reconstitution. 1 month, 2 to 8°C under sterile conditions after reconstitution.
Shipping:	The product is shipped at 4°C. Upon receipt, store it immediately at the temperature recommended above.

Application Information

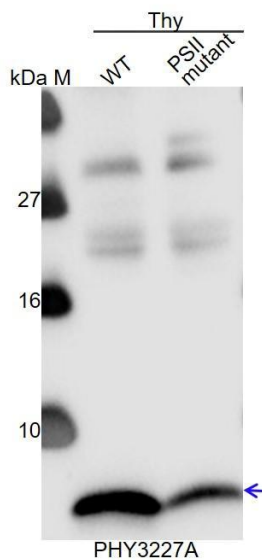
Recommended Dilution:	Western Blot (1:1000-1:2000) Note: Optimal dilutions/concentrations should be determined by the end user.
Expected / apparent MW:	4 kDa
Confirmed Reactivity:	<i>Arabidopsis thaliana</i>
Predicted Reactivity:	Among species analyzed, the sequence of the synthetic peptide used

Research Use Only

for immunization is 80-99% homologues with the sequence in *Oryza sativa*, *Triticum aestivum*, *Solanum lycopersicum*, *Solanum tuberosum*, *Brassica napus*, *Glycine max*, *Sorghum bicolor*, *Medicago truncatula*, *Vitis vinifera*, *Gossypium raimondii*, *Physcomitrella patens*.

For homologues with other species especially algae, please contact tech support at tech@phytoab.com.

Application Example



Thy-WT is thylakoid membrane protein from WT of *Arabidopsis thaliana* containing 2.5 µg of chlorophyll.

Thy-PS II is thylakoid membrane protein from an *Arabidopsis* mutant with low accumulation of PS II containing 2.5 µg of chlorophyll.

Electrophoresis: Tricine-SDS-PAGE

Transfer: blotting to NC (nitrocellulose) membrane for 1 h.

Blocking: 5% skim milk at RT or 4°C for 1 h.

Primary antibody: 1:1000 dilution overnight at 4°C.

Secondary antibody: 1:10000 dilution using Goat Anti-Rabbit IgG H&L (HRP) (Cat# PHY6000).

Detection: using chemiluminescence substrate and image were captured with CCD camera.