

# Anti-Serine/threonine-protein kinase SNRK2.2/3/4/6/9/10 antibody

Catalog: PHY0715A

## Product Information

<b>Description:</b>	Rabbit polyclonal antibody
<b>Background:</b>	SNRK2.2/3/4/6/9/10 is a member of SNF1-related protein kinases (SnRK2) whose activity is activated by ionic (salt) and non-ionic (mannitol) osmotic stress.
<b>Synonyms:</b>	SNRK2.2/3/4/6/9/10, ATOST1, OPEN STOMATA 1, OST1, P44, SNF1-RELATED PROTEIN KINASE 2.2/3/4/6/9/10, SNRK2-6, SRK2E, SUCROSE NONFERMENTING 1-RELATED PROTEIN KINASE 2-6
<b>Immunogen:</b>	KLH-conjugated synthetic peptide (30 aa from N terminal section) derived from <i>Arabidopsis thaliana</i> SNRK2.6 (AT4G33950), SNRK2.9 (AT2G23030), SNRK2.4 (AT1G10940), SNRK2.3 (AT5G66880), SNRK2.2 (AT3G50500) and SNRK2.10(AT1G60940).
<b>Form:</b>	Lyophilized
<b>Quantity:</b>	150 µg
<b>Purification:</b>	Immunogen affinity purified
<b>Reconstitution:</b>	Reconstitution with 150µl of 0.01M sterile PBS. "Note: please spin tube briefly prior to opening it to avoid any losses that might occur from lyophilized material adhering to the cap or sides of the tube".
<b>Stability &amp; Storage:</b>	Use a manual defrost freezer and avoid repeated freeze-thaw cycles. 12 months from date of receipt, -20 to -70°C as supplied. 6 months, -20 to -70°C under sterile conditions after reconstitution. 1 month, 2 to 8°C under sterile conditions after reconstitution.
<b>Shipping:</b>	The product is shipped at 4°C. Upon receipt, store it immediately at the temperature recommended above.

## Application Information

<b>Recommended Dilution:</b>	Western Blot (1:1000-1:2000) Note: Optimal dilutions/concentrations should be determined by the end user.
<b>Expected / apparent MW:</b>	41kDa

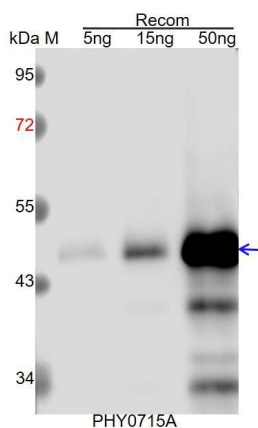
Research Use Only

### Predicted Reactivity:

Among species analyzed, the sequence of the synthetic peptide used for immunization is 100% homologues with the sequence in *Oryza sativa*, *Brassica rapa*, *Brassica napus*, *Glycine max*, *Setaria viridis*, *Panicum virgatum*, *Hordeum vulgare*, *Cucumis sativus*, *Spinacia oleracea*, *Triticum aestivum*, *Vitis vinifera*, *Medicago truncatula*, *Sorghum bicolor*, *Gossypium raimondii*, *Populus trichocarpa*, *Nicotiana tabacum*, *Solanum tuberosum*, *Solanum lycopersicum*.

For more species homologues information, please contact tech support at [tech@phytoab.com](mailto:tech@phytoab.com).

### Application Example



Recom: 5 ng, 15 ng and 50 ng recombinant protein containing the peptide for immunization and having a molecular mass of 48 kDa.

**Electrophoresis:** 12% SDS-PAGE

**Transfer:** blotting to NC (nitrocellulose) membrane for 1 h.

**Blocking:** 5% skim milk at RT or 4°C for 1 h.

**Primary antibody:** 1:1000 dilution overnight at 4°C.

**Secondary antibody:** 1:10000 dilution using Goat Anti-Rabbit IgG H&L (HRP) (Cat# PHY6000).

**Detection:** using chemiluminescence substrate and image were captured with CCD camera.