

# Anti-Psbl subunit of Photosystem II antibody

Catalog: PHY0132A

## Product Information

<b>Description:</b>	Rabbit polyclonal antibody
<b>Background:</b>	Psbl is one of the components of the core complex of Photosystem II. Psbl is associated with the PSII reaction center protein D1 and is required for PSII stability and/or assembly. The molecular mass of Psbl is about 4.8 kDa.
<b>Synonyms:</b>	Psbl, PHOTOSYSTEM II REACTION CENTER PROTEIN I
<b>Immunogen:</b>	KLH-conjugated synthetic peptide (15 aa from C terminal section) derived from <i>Arabidopsis thaliana</i> Psbl (ATCG00080).
<b>Form:</b>	Lyophilized
<b>Quantity:</b>	150 µg
<b>Purification:</b>	Immunogen affinity purified
<b>Reconstitution:</b>	Reconstitution with 150 µl of 0.01 M sterile PBS. "Note: please spin tube briefly prior to opening it to avoid any losses that might occur from lyophilized material adhering to the cap or sides of the tube".
<b>Stability &amp; Storage:</b>	Use a manual defrost freezer and avoid repeated freeze-thaw cycles. 12 months from date of receipt, -20 to -70°C as supplied. 6 months, -20 to -70°C under sterile conditions after reconstitution. 1 month, 2 to 8°C under sterile conditions after reconstitution.
<b>Shipping:</b>	The product is shipped at 4°C. Upon receipt, store it immediately at the temperature recommended above.

## Application Information

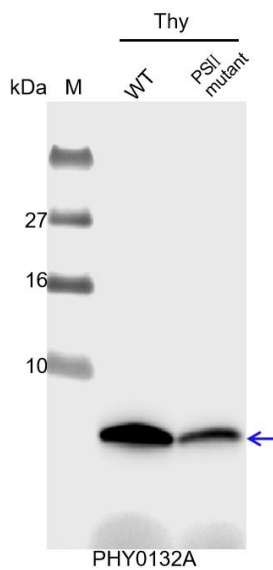
<b>Recommended Dilution:</b>	Western Blot (1:1000-1:5000) Note: Optimal dilutions/concentrations should be determined by the end user.
<b>Expected / apparent MW:</b>	4 / 5 kDa
<b>Confirmed Reactivity:</b>	<i>Arabidopsis thaliana</i>
<b>Predicted Reactivity:</b>	Among species analyzed , the sequence of the synthetic peptide used for immunization is 100% homologues with the sequence in <i>Medicago truncatula</i> , <i>Triticum aestivum</i> , <i>Zea mays</i> , <i>Brassica rapa</i> ,

Research Use Only

*Nicotiana tabacum*, *Sorghum bicolor*, *Glycine max*, *Brassica napus*, and 80-99% homologues with the sequence in *Oryza sativa*, *Hordeum vulgare*, *Physcomitrella patens*, *Setaria viridis*, *Panicum virgatum*, *Gossypium raimondii*, *Populus trichocarpa*.

For more species homologues information, please contact tech support at [tech@phytoab.com](mailto:tech@phytoab.com).

## Application Example



Thy-WT: thylakoid membrane protein from WT of *Arabidopsis thaliana* containing 0.05  $\mu$ g of chlorophyll.

PS II mutant: thylakoid membrane protein from an *Arabidopsis* mutant with low accumulation of PS II containing 0.05  $\mu$ g of chlorophyll.

**Electrophoresis:** Tricine-SDS-PAGE

**Transfer:** blotting to NC (nitrocellulose) membrane for 1 h.

**Blocking:** 5% skim milk at RT or 4°C for 1 h.

**Primary antibody:** 1:5000 dilution overnight at 4°C.

**Secondary antibody:** 1:10000 dilution using Goat Anti-Rabbit IgG H&L (HRP) (Cat# PHY6000).

**Detection:** using chemiluminescence substrate and image were captured with CCD camera.