

Anti-ApcB, N-terminal antibody

Catalog: PHY5289S

Product Information

| | |
|---------------------------------|---|
| Description: | Rabbit polyclonal antibody |
| Background: | Allophycocyanin beta subunit, encoded by the <i>ApcB</i> (<i>slr1986</i>) in <i>Synechocystis</i> sp. PCC 6803. |
| Synonyms: | ApcB |
| Immunogen: | KLH-conjugated synthetic peptide (9 aa from N terminal section) derived from <i>Synechocystis</i> sp. PCC 6803 ApcB (<i>slr1986</i>). |
| Form: | Lyophilized |
| Quantity: | 150 µg |
| Purification: | Serum Peptide affinity form antibody available upon request at info@phytoab.com . |
| Reconstitution: | Reconstitution with 150 µl of sterile water. "Note: please spin tube briefly prior to opening it to avoid any losses that might occur from lyophilized material adhering to the cap or sides of the tube". |
| Stability & Storage: | Use a manual defrost freezer and avoid repeated freeze-thaw cycles. 12 months from date of receipt, -20 to -70°C as supplied. 6 months, -20 to -70°C under sterile conditions after reconstitution. 1 month, 2 to 8°C under sterile conditions after reconstitution. |
| Shipping: | The product is shipped at 4°C. Upon receipt, store it immediately at the temperature recommended above. |

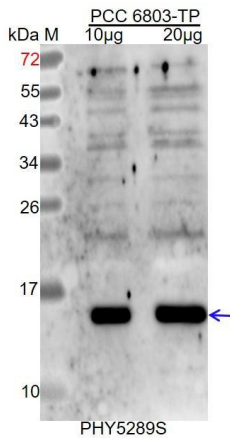
Application Information

| | |
|--------------------------------|--|
| Recommended Dilution: | Western Blot (1:1000-1:5000) Note: Optimal dilutions/concentrations should be determined by the end user. |
| Expected / apparent MW: | 17 / 14 kDa |
| Confirmed Reactivity: | <i>Synechocystis</i> sp. PCC 6803 |
| Predicted Reactivity: | Among species analyzed, the sequence of the synthetic peptide used for immunization is 80-99% homologues with the sequence in <i>Synechococcus elongatus</i> PCC 7942. |

Research Use Only

For more species homologues information, please contact tech support at tech@phytoab.com.

Application Example



PCC 6803-TP: thylakoid membrane protein from *Arabidopsis thaliana* containing 10 µg, and 20 µg of chlorophyll, respectively.

Electrophoresis: 15% SDS-PAGE.

Transfer: blotting to NC (nitrocellulose) membrane for 1h.

Blocking: 5% skim milk at RT for 1h.

Primary antibody: 1:5000 dilution overnight at 4°C.

Secondary antibody: 1:5000 dilution using Goat Anti-Rabbit IgG H&L (Cat# PHY6000).

Detection: using chemiluminescence substrate and image were captured with CCD camera.