

Anti-Ras-related protein RABF2a antibody

Catalog: PHY0874S

Product Information

Description:	Rabbit polyclonal antibody
Background:	Rab5, a subfamily of Rab GTPases, regulates a variety of endosomal functions as a molecular switch. <i>Arabidopsis thaliana</i> has three Rab5 members: ARA7 (AT4G19640), RHA1 (AT5G45130), and ARA6 (AT3G54840). RHA1 is involved in the trafficking of soluble cargo proteins from the prevacuolar compartment to the central vacuole and vacuolar transport of storage proteins with EREX as effector.
Synonyms:	RHA1, ARABIDOPSIS RAB HOMOLOG F2A, ATRAB-F2A, ATRAB5A, ATRABF2A, RAB HOMOLOG 1, RAB HOMOLOG F2A, RAB-F2A, RAB5A, RABF2A
Immunogen:	KLH-conjugated synthetic peptide (15 aa from Central section) derived from <i>Arabidopsis thaliana</i> RHA1 (AT5G45130).
Form:	Lyophilized
Quantity:	150 µg
Purification:	Serum Peptide affinity form antibody available upon request at info@phytoab.com .
Reconstitution:	Reconstitution with 150µl of sterile water. "Note: please spin tube briefly prior to opening it to avoid any losses that might occur from lyophilized material adhering to the cap or sides of the tube".
Stability & Storage:	Use a manual defrost freezer and avoid repeated freeze-thaw cycles. 12 months from date of receipt, -20 to -70°C as supplied. 6 months, -20 to -70°C under sterile conditions after reconstitution. 1 month, 2 to 8°C under sterile conditions after reconstitution.
Shipping:	The product is shipped at 4°C. Upon receipt, store it immediately at the temperature recommended above.

Application Information

Applications:	Western Blot (1:1000-1:2000) Note: Optimal dilutions/concentrations should be determined by the end user.
----------------------	--

Research Use Only

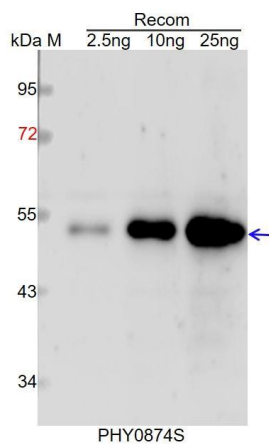
Expected / apparent MW: 22 kDa

Predicted Reactivity: Among species analyzed, the sequence of the synthetic peptide used for immunization is 100% homologues with the sequence in *Brassica napus*, and 80-99% homologues with the sequence in *Gossypium raimondii*, *Nicotiana tabacum*, *Populus trichocarpa*, *Solanum lycopersicum*, *Solanum tuberosum*, *Brassica rapa*, *Panicum virgatum*, *Cucumis sativus*, *Zea mays*, *Sorghum bicolor*, *Setaria viridis*.

The sequence of the synthetic peptide used for immunization is 87% (13/15) homologues with the sequence in ARA7 (AT4G19640).

For more species homologues information, please contact tech support at tech@phytoab.com.

Application Example



Recom: 2.5 ng, 10 ng and 25 ng recombinant protein containing the peptide for immunization and having a molecular mass of 53 kDa.

Electrophoresis: 12% SDS-PAGE

Transfer: blotting to NC (nitrocellulose) membrane for 1 h.

Blocking: 5% skim milk at RT or 4°C for 1 h.

Primary antibody: 1:1000 dilution overnight at 4°C.

Secondary antibody: 1:10000 dilution using Goat Anti-Rabbit IgG &L (HRP) (Cat# PHY6000).

Detection: using chemiluminescence substrate and image were captured with CCD camera.