

Anti-ATPase 2, plasma membrane-type antibody

Catalog: PHY3966S

Product Information

Description:	Rabbit polyclonal antibody
Background:	AHA2 belongs to the P-type ATPase superfamily of cation-transporting ATPases, pumps protons out of the cell, generating a proton gradient that drives the active transport of nutrients by proton symport.
Synonyms:	AHA2, ATHA2, H(+)-ATPASE 2, HA2, PLASMA MEMBRANE PROTON ATPASE 2, PMA2
Immunogen:	KLH-conjugated synthetic peptide (15 aa from C terminal section) derived from <i>Arabidopsis thaliana</i> AHA2 (AT4G30190).
Form:	Lyophilized
Quantity:	150 µg
Purification:	Serum Peptide affinity form antibody available upon request at info@phytoab.com .
Reconstitution:	Reconstitution with 150 µl of sterile water. "Note: please spin tube briefly prior to opening it to avoid any losses that might occur from lyophilized material adhering to the cap or sides of the tube".
Stability & Storage:	Use a manual defrost freezer and avoid repeated freeze-thaw cycles. 12 months from date of receipt, -20 to -70°C as supplied. 6 months, -20 to -70°C under sterile conditions after reconstitution. 1 month, 2 to 8°C under sterile conditions after reconstitution.
Shipping:	The product is shipped at 4°C. Upon receipt, store it immediately at the temperature recommended above.

Application Information

Recommended Dilution:	Western Blot (1:1000-1:2000) Note: Optimal dilutions/concentrations should be determined by the end user.
Expected / apparent MW:	108 kDa
Predicted Reactivity:	Among species analyzed, the sequence of the synthetic peptide used for immunization is 100% homologues with the sequence in <i>Brassica rapa</i> , <i>Brassica napus</i> , and 80-99% homologues with the sequence in

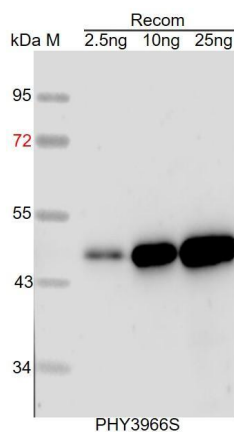
Research Use Only

Glycine max, Gossypium raimondii, Populus trichocarpa, Vitis vinifera, Cucumis sativus, Solanum tuberosum, Solanum lycopersicum, Medicago truncatula, Nicotiana tabacum.

The sequence of the synthetic peptide used for immunization is 93% (14/15) homologues with the sequence in AHA5 (AT2G24520), and 87% (13/15) homologues with the sequence in AHA8 (AT3G42640) and AHA9 (AT1G80660), and 80% (12/15) homologues with the sequence in AHA6 (AT2G07560) and AHA1 (AT2G18960).

For more species homologues information, please contact tech support at tech@phytoab.com.

Application Example



Recom: 2.5 ng, 10 ng and 25 ng recombinant protein containing the peptide for immunization and having a molecular mass of 48 kDa.

Electrophoresis: 12% SDS-PAGE

Transfer: blotting to NC (nitrocellulose) membrane for 1 h.

Blocking: 5% skim milk at RT or 4°C for 1 h.

Primary antibody: 1:1000 dilution overnight at 4°C.

Secondary antibody: 1:10000 dilution using Goat Anti-Rabbit IgG H&L (HRP) (Cat# PHY6000).

Detection: using chemiluminescence substrate and image were captured with CCD camera.