

Anti-PsaG subunit of photosystem I antibody

Catalog: PHY0106A

Product Information

Description:	Rabbit polyclonal antibody
Background:	PsaG is an 11-kDa membrane protein; it plays an important role in electron transport between plastocyanin and PSI and is involved in the stability of the PSI complex.
Synonyms:	PsaG, PHOTOSYSTEM I SUBUNIT G, Photosystem I reaction center subunit V, chloroplastic
Immunogen:	KLH-conjugated synthetic peptide (15 aa from C terminal section) derived from <i>Arabidopsis thaliana</i> PsaG (AT1G55670).
Form:	Lyophilized
Quantity:	150 µg
Purification:	Immunogen affinity purified
Reconstitution:	Reconstitution with 150 µl of 0.01M sterile PBS. "Note: please spin tube briefly prior to opening it to avoid any losses that might occur from lyophilized material adhering to the cap or sides of the tube".
Stability &	Use a manual defrost freezer and avoid repeated freeze-thaw cycles.
Storage:	12 months from date of receipt, -20 to -70°C as supplied. 6 months, -20 to -70°C under sterile conditions after reconstitution. 1 month, 2 to 8°C under sterile conditions after reconstitution.
Shipping:	The product is shipped at 4°C. Upon receipt, store it immediately at the temperature recommended above.

Application Information

Recommended Dilution:	Western Blot (1:1000-1:8000) Note: Optimal dilutions/concentrations should be determined by the end user.
Expected / apparent MW:	17 / 11 kDa
Confirmed Reactivity:	<i>Arabidopsis thaliana</i>
Predicted Reactivity:	Among species analyzed, the sequence of the synthetic peptide used for immunization is 100% homologous with the sequence in <i>Brassica napus</i> , <i>Brassica rapa</i> , and 80-99% homologous with the sequence in

Research Use Only

Triticum aestivum, Hordeum vulgare, Panicum virgatum, Oryza sativa, Zea mays, Setaria viridis, Populus trichocarpa, Sorghum bicolor, Gossypium raimondii, Medicago truncatula, Glycine max, Spinacia oleracea, Vitis vinifera, Nicotiana tabacum.

For more species homologues information, please contact tech support at tech@phytoab.com.

Application Example

Example1



Thy: Thylakoid membrane protein from *Arabidopsis thaliana* containing 2 µg of chlorophyll.

Electrophoresis: Tricine-SDS-PAGE

Transfer: blotting to NC (nitrocellulose) membrane for 1 h.

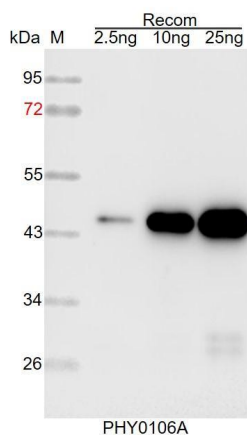
Blocking: 5% skim milk at RT or 4°C for 1 h.

Primary antibody: 1:8000 dilution overnight at 4°C.

Secondary antibody: 1:10000 dilution using Goat Anti-Rabbit IgG H&L (HRP) (Cat# PHY6000)

Detection: using chemiluminescence substrate and image were captured with CCD camera.

Example2



Recom: 2.5 ng, 10 ng and 25 ng recombinant protein containing the peptide for immunization and having a molecular mass of 50 kDa.

Electrophoresis: 12% SDS-PAGE

Transfer: blotting to NC (nitrocellulose) membrane for 1 h.

Blocking: 5% skim milk at RT or 4°C for 1 h.

Primary antibody: 1:1000 dilution overnight at 4°C.

Secondary antibody: 1:10000 dilution using Goat Anti-Rabbit IgG H&L (HRP) (Cat# PHY6000)

Detection: using chemiluminescence substrate and image were captured with CCD camera.

