

Anti-ATP sulfurylase 2 antibody

Catalog: PHY2847A

Product Information

Description:	Rabbit polyclonal antibody
Background:	Sulfur nutrition is crucial for plant growth and development, as well as crop yield and quality. APS2 is involved in step 1 of the subpathway that synthesizes sulfite from sulfate.
Synonyms:	APS2, ASA1, ATP SULFURYLASE ARABIDOPSIS 1, ATPS2
Immunogen:	KLH-conjugated synthetic peptide (18 aa from C terminal section) derived from <i>Arabidopsis thaliana</i> APS2 (AT1G19920).
Form:	Lyophilized
Quantity:	150 µg
Purification:	Immunogen affinity purified
Reconstitution:	Reconstitution with 150 µl of 0.01 M sterile PBS. "Note: please spin tube briefly prior to opening it to avoid any losses that might occur from lyophilized material adhering to the cap or sides of the tube".
Stability & Storage:	Use a manual defrost freezer and avoid repeated freeze-thaw cycles. 12 months from date of receipt, -20 to -70°C as supplied. 6 months, -20 to -70°C under sterile conditions after reconstitution. 1 month, 2 to 8°C under sterile conditions after reconstitution.
Shipping:	The product is shipped at 4°C. Upon receipt, store it immediately at the temperature recommended above.

Application Information

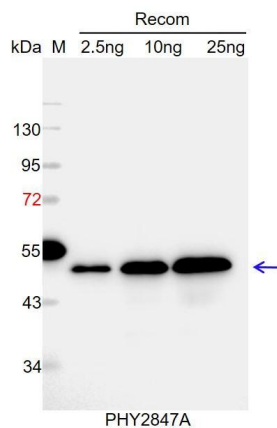
Recommended Dilution:	Western Blot (1:1000-1:2000) Note: Optimal dilutions/concentrations should be determined by the end user.
Expected / apparent MW:	54 / 48 kDa
Confirmed Reactivity:	<i>Arabidopsis thaliana</i>
Predicted Reactivity:	Among species analyzed, the sequence of the synthetic peptide used for immunization is 100% homologues with the sequence in <i>Brassica napus</i> , <i>Brassica rapa</i> , <i>Glycine max</i> , <i>Gossypium raimondii</i> , <i>Nicotiana</i>

Research Use Only

tabacum, *Medicago truncatula*, *Spinacia oleracea*, *Vitis vinifera*, *Cucumis sativus*, *Populus trichocarpa*, and 80-99% homologues with the sequence in *Hordeum vulgare*, *Setaria viridis*, *Panicum virgatum*, *Sorghum bicolor*, *Triticum aestivum*, *Zea mays*, *Oryza sativa*.
For more species homologues information, please contact tech support at tech@phytoab.com.

Application Example

Example1



Recom: 2.5 ng, 10 ng and 25 ng recombinant protein containing the peptide for immunization and having a molecular mass of 50 kDa.

Electrophoresis: 12% SDS-PAGE

Transfer: blotting to NC (nitrocellulose) membrane for 1 h.

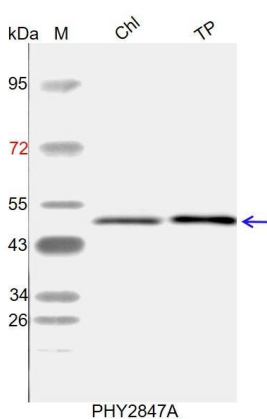
Blocking: 5% skim milk at RT or 4°C for 1 h.

Primary antibody: 1:1000 dilution overnight at 4°C.

Secondary antibody: 1:10000 dilution using Goat Anti-Rabbit IgG &L (HRP) (Cat# PHY6000).

Detection: using chemiluminescence substrate and image were captured with CCD camera.

Example2



Chl: 7.5 µg total chloroplast protein from *Arabidopsis thaliana*.

TP: 15 µg total protein from *Arabidopsis thaliana*.

Electrophoresis: 15% SDS-PAGE

Transfer: blotting to NC (nitrocellulose) membrane for 1 h.

Blocking: 5% skim milk at RT or 4°C for 1 h.

Primary antibody: 1:2000 dilution overnight at 4°C.

Secondary antibody: 1:10000 dilution using Goat Anti-Rabbit IgG &L (HRP) (Cat# PHY6000).

Detection: using chemiluminescence substrate and image were captured with CCD camera.