

# Anti-Proteasome subunit alpha type-5-A/B antibody

Catalog: PHY2966S

## Product Information

<b>Description:</b>	Rabbit polyclonal antibody
<b>Background:</b>	PAE1/2 are 20S proteasome subunit.
<b>Synonyms:</b>	PAE1/2, 20S PROTEASOME ALPHA SUBUNIT E1/2
<b>Immunogen:</b>	KLH-conjugated synthetic peptide (16 aa from Central section) derived from <i>Arabidopsis thaliana</i> PAE1 (AT1G53850) and PAE2 (AT3G14290).
<b>Form:</b>	Lyophilized
<b>Quantity:</b>	150 µg
<b>Purification:</b>	Serum  Peptide affinity form antibody available upon request at <a href="mailto:info@phytoab.com">info@phytoab.com</a> .
<b>Reconstitution:</b>	Reconstitution with 150 µl of sterile water.  "Note: please spin tube briefly prior to opening it to avoid any losses that might occur from lyophilized material adhering to the cap or sides of the tube".
<b>Stability &amp; Storage:</b>	Use a manual defrost freezer and avoid repeated freeze-thaw cycles.  12 months from date of receipt, -20 to -70°C as supplied.  6 months, -20 to -70°C under sterile conditions after reconstitution.  1 month, 2 to 8°C under sterile conditions after reconstitution.
<b>Shipping:</b>	The product is shipped at 4°C. Upon receipt, store it immediately at the temperature recommended above.

## Application Information

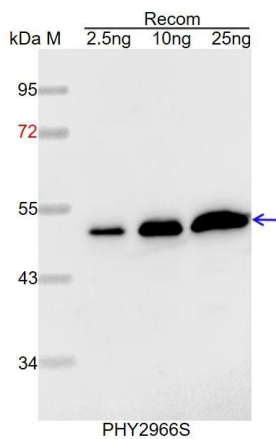
<b>Recommended Dilution:</b>	Western Blot (1:1000-1:2000)  Note: Optimal dilutions/concentrations should be determined by the end user.
<b>Expected / apparent MW:</b>	26 kDa
<b>Predicted Reactivity:</b>	Among species analyzed, the sequence of the synthetic peptide used for immunization is 100% homologues with the sequence in <i>Glycine max</i> , <i>Brassica napus</i> , <i>Brassica rapa</i> , <i>Solanum lycopersicum</i> , <i>Nicotiana tabacum</i> , <i>Medicago truncatula</i> , <i>Triticum aestivum</i> , <i>Hordeum vulgare</i> , and 80-99% homologues with the sequence in

Research Use Only

*Vitis vinifera*, *Zea mays*, *Gossypium raimondii*, *Panicum virgatum*,  
*Solanum tuberosum*, *Sorghum bicolor*, *Oryza sativa*, *Cucumis*  
*sativus*, *Setaria viridis*, *Populus trichocarpa*, *Physcomitrium patens*.

For more species homologues information, please contact tech support at [tech@phytoab.com](mailto:tech@phytoab.com).

## Application Example



Recom: 2.5 ng, 10 ng and 25 ng recombinant protein containing the peptide for immunization and having a molecular mass of 50 kDa.

**Electrophoresis:** 12% SDS-PAGE

**Transfer:** blotting to NC (nitrocellulose) membrane for 1 h.

**Blocking:** 5% skim milk at RT or 4°C for 1 h.

**Primary antibody:** 1:1000 dilution overnight at 4°C.

**Secondary antibody:** 1:10000 dilution using Goat Anti-Rabbit IgG H&L (HRP) (Cat# PHY6000)

**Detection:** using chemiluminescence substrate and image were captured with CCD camera.