

Anti-RNA-dependent RNA polymerase 6 antibody

Catalog: PHY3642S

Product Information

| | |
|---------------------------------|---|
| Description: | Rabbit polyclonal antibody |
| Background: | RNA-dependent RNA polymerase involved in trans-acting siRNA and other siRNA biogenesis. Required for post-transcriptional gene silencing and natural virus resistance. Loss of function mutants produce ectopic megaspore mother cell and supernumary female gametophytes. |
| Synonyms: | RDR6, ATRDR6, RNA-DEPENDENT RNA POLYMERASE 6, SDE1, SGS2, SILENCING DEFECTIVE 1, SUPPRESSOR OF GENE SILENCING 2 |
| Immunogen: | KLH-conjugated synthetic peptide (14 aa from Central section) derived from <i>Arabidopsis thaliana</i> RDR6 (AT3G49500). |
| Form: | Lyophilized |
| Quantity: | 150 µg |
| Purification: | Serum |
| | Peptide affinity form antibody available upon request at info@phytoab.com . |
| Reconstitution: | Reconstitution with 150µl of sterile water. "Note: please spin tube briefly prior to opening it to avoid any losses that might occur from lyophilized material adhering to the cap or sides of the tube". |
| Stability & Storage: | Use a manual defrost freezer and avoid repeated freeze-thaw cycles. 12 months from date of receipt, -20 to -70°C as supplied. 6 months, -20 to -70°C under sterile conditions after reconstitution. 1 month, 2 to 8°C under sterile conditions after reconstitution. |
| Shipping: | The product is shipped at 4°C. Upon receipt, store it immediately at the temperature recommended above. |

Application Information

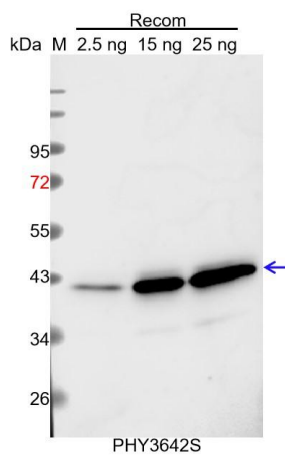
| | |
|--------------------------------|---|
| Recommended Dilution: | Western Blot (1:1000-1:2000) Note: Optimal dilutions/concentrations should be determined by the end user. |
| Expected / apparent MW: | 137 kDa |
| Predicted Reactivity: | Among species analyzed, the sequence of the synthetic peptide used for immunization is 100% homologues with the sequence in <i>Vitis vinifera</i> , |

Research Use Only

Brassica napus, Glycine max, Triticum aestivum, Panicum virgatum, Hordeum vulgare, Setaria viridis, Spinacia oleracea, Zea mays, Sorghum bicolor, Medicago truncatula, Brassica rapa, Populus trichocarpa, Nicotiana tabacum, Gossypium raimondii, and 80-99% homologues with the sequence in Solanum lycopersicum, Oryza sativa, Solanum tuberosum, Sorghum bicolor, Cucumis sativus.

For more species homologues information, please contact tech support at tech@phytoab.com.

Application Example



Recom: 2.5 ng, 15 ng and 25 ng recombinant protein containing the peptide for immunization and having a molecular mass of 41 kDa.

Electrophoresis: 12% SDS-PAGE

Transfer: blotting to NC (nitrocellulose) membrane for 1 h.

Blocking: 5% skim milk at RT or 4°C for 1 h.

Primary antibody: 1:1000 dilution overnight at 4°C.

Secondary antibody: 1:10000 dilution using Goat Anti-Rabbit IgG H&L(HRP) (Cat# PHY6000).

Detection: using chemiluminescence substrate and image were captured with CCD camera.