

Anti-NAD(P)H-quinone oxidoreductase subunit 1, chloroplastic antibody

Catalog: PHY1685A

Product Information

Description:	Rabbit polyclonal antibody
Background:	NDHA
Synonyms:	NDHA, NAD(P)H dehydrogenase subunit 1, NDH subunit 1, NADH-plastoquinone oxidoreductase subunit 1
Immunogen:	KLH-conjugated synthetic peptide (17 aa from C terminal section) derived from <i>Arabidopsis thaliana</i> ATCG01100 (NDHA), <i>Synechocystis sp.</i> PCC 6803 sll0519 (NDHA).
Form:	Lyophilized
Quantity:	150 µg
Purification:	Immunogen affinity purified
Reconstitution:	Reconstitution with 150 µl of 0.01 M sterile PBS. "Note: please spin tube briefly prior to opening it to avoid any losses that might occur from lyophilized material adhering to the cap or sides of the tube".
Stability & Storage:	Use a manual defrost freezer and avoid repeated freeze-thaw cycles. 12 months from date of receipt, -20 to -70°C as supplied. 6 months, -20 to -70°C under sterile conditions after reconstitution. 1 month, 2 to 8°C under sterile conditions after reconstitution.
Shipping:	The product is shipped at 4°C. Upon receipt, store it immediately at the temperature recommended above.

Application Information

Recommended Dilution:	Western Blot (1:1000-1:2000) Note: Optimal dilutions/concentrations should be determined by the end user.
Expected / apparent MW:	41 / 27 kDa (<i>Arabidopsis thaliana</i>); 34 kDa (<i>Synechocystis sp.</i> PCC 6803)
Confirmed Reactivity:	<i>Arabidopsis thaliana</i> , <i>Synechocystis sp.</i> PCC 6803
Predicted Reactivity:	Among species analyzed, the sequence of the synthetic peptide used for immunization is 100% homologous with the sequence in <i>Medicago</i>

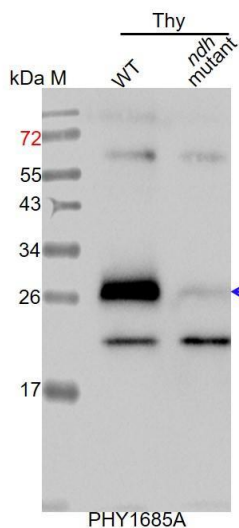
Research Use Only

truncatula, *Synechococcus elongatus* PCC 7942, *Physcomitrium patens*, *Nicotiana tabacum*, *Populus trichocarpa*, *Spinacia oleracea*, *Cucumis sativus*, *Vitis vinifera*, *Oryza sativa Indica Group*, *Solanum lycopersicum*, *Solanum tuberosum*, *Gossypium raimondii*, *Triticum aestivum*, *Glycine max*, *Leymus chinensis*, *Hordeum vulgare*, *Oryza sativa Japonica Group*, *Zea mays*, *Sorghum bicolor*, *Brassica rapa*, *Brassica napus*, *Panicum virgatum*.

For more species homologues information, please contact tech support at tech@phytoab.com.

Application Example

Example1:



Thy-WT: thylakoid membrane protein from WT of *Arabidopsis thaliana* containing 2.5 μ g of chlorophyll.

Thy-*ndh*: thylakoid membrane protein from an *ndh* mutant of *Arabidopsis thaliana* containing 2.5 μ g of chlorophyll.

Electrophoresis: 15% SDS-PAGE

Transfer: blotting to NC (nitrocellulose) membrane for 1 h.

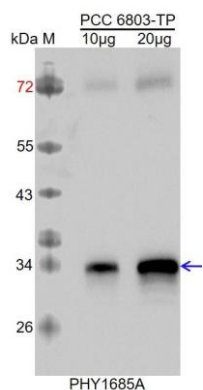
Blocking: 5% skim milk at RT or 4°C for 1 h.

Primary antibody: 1:1000 dilution overnight at 4°C.

Secondary antibody: 1:10000 dilution using Goat Anti-Rabbit IgG H&L(HRP) (Cat# PHY6000).

Detection: using chemiluminescence substrate and image were captured with CCD camera.

Example2:



PCC6803-TP: 10 μ g and 20 μ g total protein from *Synechocystis sp.* PCC 6803.

Electrophoresis: 15% SDS-PAGE

Transfer: blotting to NC (nitrocellulose) membrane for 1 h.

Blocking: 5% skim milk at RT or 4°C for 1 h.

Primary antibody: 1:2000 dilution overnight at 4°C.

Secondary antibody: 1:10000 dilution using Goat Anti-Rabbit IgG H&L(HRP) (Cat# PHY6000).

Detection: using chemiluminescence substrate and image were captured with CCD camera.

