

# Anti-Homeobox protein SHOOT MERISTEMLESS antibody

Catalog: PHY3431A

## Product Information

<b>Description:</b>	Rabbit polyclonal antibody
<b>Background:</b>	Class I knotted-like homeodomain protein that is required for shoot apical meristem (SAM) formation during embryogenesis and for SAM function throughout the lifetime of the plant. Functions by preventing incorporation of cells in the meristem center into differentiating organ primordia. It has also been shown to have a role in the specification of flower meristem identity.
<b>Synonyms:</b>	STM, BUM, BUM1, BUMBERSHOOT, BUMBERSHOOT 1, SHL, SHOOT MERISTEMLESS, SHOOTLESS, WALDMEISTER, WALDMEISTER 1, WAM, WAM1
<b>Immunogen:</b>	KLH-conjugated synthetic peptide (15 aa from C terminal section) derived from <i>Arabidopsis thaliana</i> STM (AT1G62360).
<b>Form:</b>	Lyophilized
<b>Quantity:</b>	150 µg
<b>Purification:</b>	Immunogen affinity purified
<b>Reconstitution:</b>	Reconstitution with 150 µl of 0.01 M sterile PBS. "Note: please spin tube briefly prior to opening it to avoid any losses that might occur from lyophilized material adhering to the cap or sides of the tube".
<b>Stability &amp; Storage:</b>	Use a manual defrost freezer and avoid repeated freeze-thaw cycles. 12 months from date of receipt, -20 to -70°C as supplied. 6 months, -20 to -70°C under sterile conditions after reconstitution. 1 month, 2 to 8°C under sterile conditions after reconstitution.
<b>Shipping:</b>	The product is shipped at 4°C. Upon receipt, store it immediately at the temperature recommended above.

## Application Information

<b>Recommended Dilution:</b>	Western Blot (1:1000-1:2000) Note: Optimal dilutions/concentrations should be determined by the end user.
<b>Expected / apparent MW:</b>	43 kDa

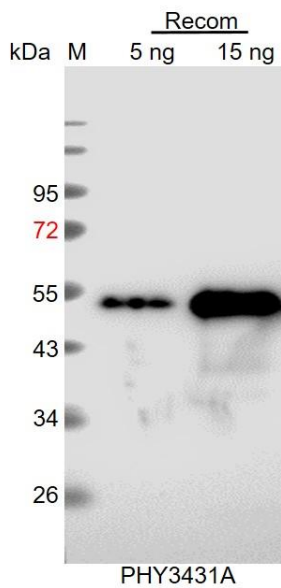
Research Use Only

**Predicted Reactivity:**

Among species analyzed, the sequence of the synthetic peptide used for immunization is 100% homologues with the sequence in *Brassica napus*, *Brassica rapa*, and 80-99% homologues with the sequence in *Vitis vinifera*, *Solanum lycopersicum*, *Solanum tuberosum*.

For more species homologues information, please contact tech support at [tech@phytoab.com](mailto:tech@phytoab.com).

**Application Example**



Recom: 5 ng and 15 ng recombinant protein containing the peptide for immunization and having a molecular mass of 53 kDa.

**Electrophoresis:** 12% SDS-PAGE

**Transfer:** blotting to NC (nitrocellulose) membrane for 1 h.

**Blocking:** 5% skim milk at RT or 4°C for 1 h.

**Primary antibody:** 1:1000 dilution overnight at 4°C.

**Secondary antibody:** 1:10000 dilution using Goat Anti-Rabbit IgG H&L (HRP) (Cat# PHY6000).

**Detection:** using chemiluminescence substrate and image were captured with CCD camera.