

Anti-20 kDa chaperonin, chloroplastic antibody

Catalog: PHY2525S

Product Information

Description:	Rabbit polyclonal antibody
Background:	Co-chaperonin complex is required for substrate encapsulation during assisting the folding of the unfolded protein with the chaperonin complex. Co-chaperonin also termed as GroES, Cpn10 and Hsp10.CPN20 (AT5G20720) protein is a functional homolog of the CPN10 co-chaperonin, but it consists of two CPN10-like units joined head-to-tail by a short chain of amino acids.
Synonyms:	CPN20, ATCPN21, CHAPERONIN 20, CHCPN10, CHLOROPLAST CHAPERONIN 10, CPN10, CPN21
Immunogen:	KLH-conjugated synthetic peptide (12 aa from Central section) derived from <i>Arabidopsis thaliana</i> CPN20 (AT5G20720).
Form:	Lyophilized
Quantity:	150 µg
Purification:	Serum Peptide affinity form antibody available upon request at info@phytoab.com .
Reconstitution:	Reconstitution with 150 µl of sterile water. "Note: please spin tube briefly prior to opening it to avoid any losses that might occur from lyophilized material adhering to the cap or sides of the tube".
Stability &	Use a manual defrost freezer and avoid repeated freeze-thaw cycles.
Storage:	12 months from date of receipt, -20 to -70°C as supplied. 6 months, -20 to -70°C under sterile conditions after reconstitution. 1 month, 2 to 8°C under sterile conditions after reconstitution.
Shipping:	The product is shipped at 4°C. Upon receipt, store it immediately at the temperature recommended above.

Application Information

Recommended Dilution:	Western Blot (1:1000-1:5000) Note: Optimal dilutions/concentrations should be determined by the end user.
Expected / apparent MW:	27 / 23 kDa

Research Use Only

Confirmed Reactivity:

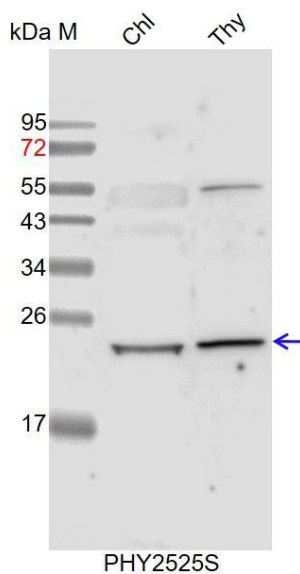
Arabidopsis thaliana

Predicted Reactivity:

Among species analyzed, the sequence of the synthetic peptide used for immunization is 100% homologues with the sequence in *Brassica rapa*, *Brassica napus*, and 80-99% homologues with the sequence in *Sorghum bicolor*, *Zea mays*, *Panicum virgatum*, *Setaria viridis*, *Oryza sativa Japonica Group*.

For more species homologues information, please contact tech support at tech@phytoab.com.

Application Example



Chl: 10 μ l total chloroplast protein from *Arabidopsis thaliana*.

Thy: thylakoid membrane protein from *Arabidopsis thaliana* containing 2.5 μ g of chlorophyll.

Electrophoresis: 15% SDS-PAGE

Transfer: blotting to NC (nitrocellulose) membrane for 1 h.

Blocking: 5% skim milk at RT or 4°C for 1 h.

Primary antibody: 1:5000 dilution overnight at 4°C.

Secondary antibody: 1:10000 dilution using Goat Anti-Rabbit IgG H&L (HRP) (Cat# PHY6000).

Detection: using chemiluminescence substrate and image were captured with CCD camera.