

# Anti-DEMETER-LIKE1/2 protein antibody

Catalog: PHY2389A

## Product Information

<b>Description:</b>	Rabbit polyclonal antibody
<b>Background:</b>	ROS1 is a repressor of transcriptional gene silencing. Functions by demethylating the target promoter DNA and it interacts physically with RPA2/ROR1. In the <i>ros1</i> mutants, an increase in methylation is observed in a number of gene promoters. Among the loci affected by <i>ros1</i> , a few (RD29A and AT1G76930) are affected in cytosine methylation in all sequence contexts (CpG, CpNpG or CpNpN), although many others are affected primarily in non-CpG contexts.
<b>Synonyms:</b>	DML1/2, DEMETER-LIKE 1/2
<b>Immunogen:</b>	KLH-conjugated synthetic peptide (16 aa from C terminal section) derived from <i>Arabidopsis thaliana</i> DML1 (AT2G36490) and DML2 (AT3G10010).
<b>Form:</b>	Lyophilized
<b>Quantity:</b>	150 µg
<b>Purification:</b>	Immunogen affinity purified
<b>Reconstitution:</b>	Reconstitution with 150 µl of 0.01 M sterile PBS. "Note: please spin tube briefly prior to opening it to avoid any losses that might occur from lyophilized material adhering to the cap or sides of the tube".
<b>Stability &amp;</b>	Use a manual defrost freezer and avoid repeated freeze-thaw cycles.
<b>Storage:</b>	12 months from date of receipt, -20 to -70°C as supplied. 6 months, -20 to -70°C under sterile conditions after reconstitution. 1 month, 2 to 8°C under sterile conditions after reconstitution.
<b>Shipping:</b>	The product is shipped at 4°C. Upon receipt, store it immediately at the temperature recommended above.

## Application Information

<b>Recommended Dilution:</b>	Western Blot (1:1000-1:2000) Note: Optimal dilutions/concentrations should be determined by the end user.
<b>Expected / apparent MW:</b>	157 kDa

Research Use Only

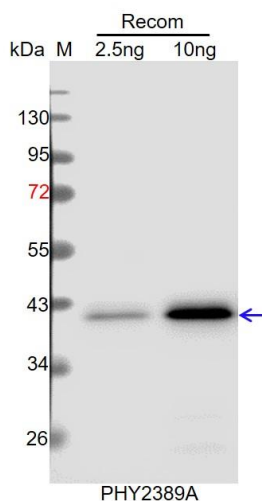
### Predicted Reactivity:

Among species analyzed, the sequence of the synthetic peptide used for immunization is 100% homologues with the sequence in *Glycine max*, *Gossypium raimondii*, *Vitis vinifera*, *Solanum tuberosum*, *Populus trichocarpa*, *Solanum lycopersicum*, *Cucumis sativus*, *Nicotiana tabacum*, and 80-99% homologues with the sequence in *Medicago truncatula*, *Oryza sativa*, *Zea mays*, *Brassica rapa*, *Brassica napus*.

The sequence of the synthetic peptide used for immunization is 81% homologues with the sequence in DME (AT5G04560).

For more species homologues information, please contact tech support at [tech@phytoab.com](mailto:tech@phytoab.com).

### Application Example



Recom: 2.5 ng and 10 ng recombinant protein containing the peptide for immunization and having a molecular mass of 42 kDa.

**Electrophoresis:** 12% SDS-PAGE

**Transfer:** blotting to NC (nitrocellulose) membrane for 1 h.

**Blocking:** 5% skim milk at RT or 4°C for 1 h.

**Primary antibody:** 1:1000 dilution overnight at 4°C.

**Secondary antibody:** 1:10000 dilution using Goat Anti-Rabbit IgG H&L (HRP) (Cat# PHY6000)

**Detection:** using chemiluminescence substrate and image were captured with CCD camera.