

Anti-Lhca5 protein of LHCI, C-terminal antibody

Catalog: PHY3083A

Product Information

Description:	Rabbit polyclonal antibody
Background:	The light-harvesting complex (LHC) consists of chlorophylls A and B and the chlorophyll A-B binding protein. Lhca5 is a low abundant chlorophyll a/b-binding protein that has been found to associate with Photosystem I in sub-stoichiometric amounts. Unlike the four main Lhca-types (Lhca1-4) Lhca5 seems to be able to associate with PSI or the LHCI at varying positions.
Synonyms:	Lhca5, LHCA5, PHOTOSYSTEM I LIGHT HARVESTING COMPLEX GENE 5
Immunogen:	KLH-conjugated synthetic peptide (17 aa from C terminal section) derived from <i>Arabidopsis thaliana</i> Lhca5 (AT1G45474).
Form:	Lyophilized
Quantity:	150 µg
Purification:	Immunogen affinity purified
Reconstitution:	Reconstitution with 150 µl of 0.01 M sterile PBS. "Note: please spin tube briefly prior to opening it to avoid any losses that might occur from lyophilized material adhering to the cap or sides of the tube".
Stability & Storage:	Use a manual defrost freezer and avoid repeated freeze-thaw cycles. 12 months from date of receipt, -20 to -70°C as supplied. 6 months, -20 to -70°C under sterile conditions after reconstitution. 1 month, 2 to 8°C under sterile conditions after reconstitution.
Shipping:	The product is shipped at 4°C. Upon receipt, store it immediately at the temperature recommended above.

Application Information

Recommended Dilution:	Western Blot (1:1000-1:2000) Note: Optimal dilutions/concentrations should be determined by the end user.
Expected / apparent MW:	28 / 24 kDa
Confirmed Reactivity	<i>Arabidopsis thaliana</i>
Predicted Reactivity:	Among species analyzed, the sequence of the synthetic peptide used

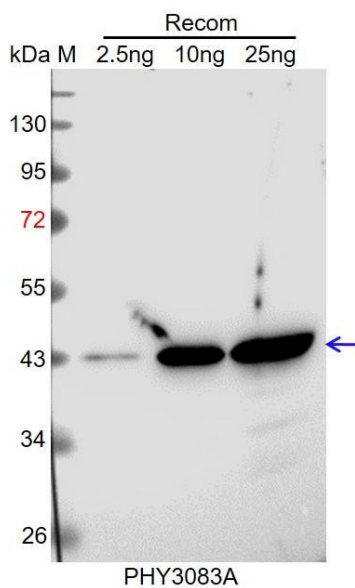
Research Use Only

for immunization is 80-99% homologues with the sequence in *Glycine max*, *Spinacia oleracea*, *Brassica rapa*, *Gossypium raimondii*, *Vitis vinifera*, *Cucumis sativus*, *Brassica napus*.

For more species homologues information, please contact tech support at tech@phytoab.com.

Application Example

Example 1



Recom: 2.5 ng, 10 ng and 25 ng recombinant protein containing the peptide for immunization and having a molecular mass of 43 kDa.

Electrophoresis: 12% SDS-PAGE

Transfer: blotting to NC (nitrocellulose) membrane for 1 h.

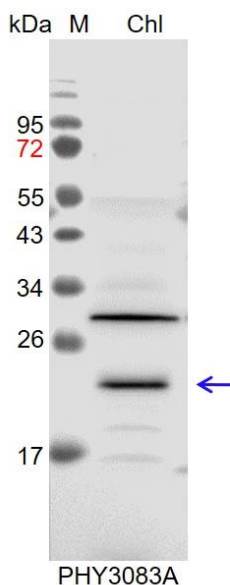
Blocking: 5% skim milk at RT or 4°C for 1 h.

Primary antibody: 1:1000 dilution overnight at 4°C.

Secondary antibody: 1:10000 dilution using Goat Anti-Rabbit IgG H&L (HRP) (Cat# PHY6000).

Detection: using chemiluminescence substrate and image were captured with CCD camera.

Example 2



Chl: 8 µg total chloroplast protein from *Arabidopsis thaliana*.

Electrophoresis: 15% SDS-PAGE

Transfer: blotting to NC (nitrocellulose) membrane for 1 h.

Blocking: 5% skim milk at RT or 4°C for 1 h.

Primary antibody: 1:1000 dilution overnight at 4°C.

Secondary antibody: 1:10000 dilution using Goat Anti-Rabbit IgG H&L (HRP) (Cat# PHY6000).

Detection: using chemiluminescence substrate and image were captured with CCD camera.