

# Anti-Twinkle homolog protein, chloroplastic/mitochondrial antibody

Catalog: PHY2183A

## Product Information

|                                 |                                                                                                                                                                                                                                                                               |
|---------------------------------|-------------------------------------------------------------------------------------------------------------------------------------------------------------------------------------------------------------------------------------------------------------------------------|
| <b>Description:</b>             | Rabbit polyclonal antibody                                                                                                                                                                                                                                                    |
| <b>Background:</b>              | ATH may be involved in organelle DNA replication.                                                                                                                                                                                                                             |
| <b>Synonyms:</b>                | ATH, ARABIDOPSIS TWINKLE HOMOLOG, TWINKLE                                                                                                                                                                                                                                     |
| <b>Immunogen:</b>               | KLH-conjugated synthetic peptide (15 aa from Central section) derived from <i>Arabidopsis thaliana</i> ATH (AT1G30680).                                                                                                                                                       |
| <b>Form:</b>                    | Lyophilized                                                                                                                                                                                                                                                                   |
| <b>Quantity:</b>                | 150 µg                                                                                                                                                                                                                                                                        |
| <b>Purification:</b>            | Immunogen affinity purified                                                                                                                                                                                                                                                   |
| <b>Reconstitution:</b>          | Reconstitution with 150 µl of 0.01M sterile PBS.<br>"Note: please spin tube briefly prior to opening it to avoid any losses that might occur from lyophilized material adhering to the cap or sides of the tube".                                                             |
| <b>Stability &amp; Storage:</b> | Use a manual defrost freezer and avoid repeated freeze-thaw cycles.<br>12 months from date of receipt, -20 to -70°C as supplied.<br>6 months, -20 to -70°C under sterile conditions after reconstitution.<br>1 month, 2 to 8°C under sterile conditions after reconstitution. |
| <b>Shipping:</b>                | The product is shipped at 4°C. Upon receipt, store it immediately at the temperature recommended above.                                                                                                                                                                       |

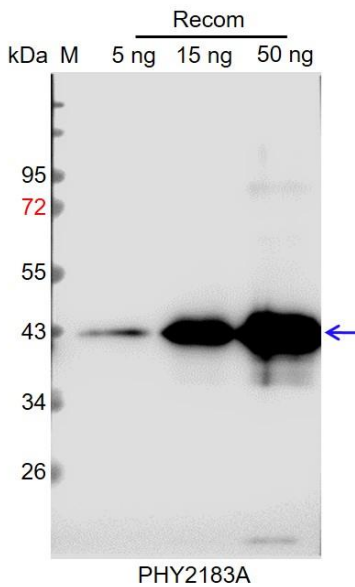
## Application Information

|                                |                                                                                                                                                                                                                                                                                                                                                                                             |
|--------------------------------|---------------------------------------------------------------------------------------------------------------------------------------------------------------------------------------------------------------------------------------------------------------------------------------------------------------------------------------------------------------------------------------------|
| <b>Recommended Dilution:</b>   | Western Blot (1:1000-1:2000)<br>Note: Optimal dilutions/concentrations should be determined by the end user.                                                                                                                                                                                                                                                                                |
| <b>Expected / apparent MW:</b> | 80 kDa                                                                                                                                                                                                                                                                                                                                                                                      |
| <b>Predicted Reactivity:</b>   | Among species analyzed, the sequence of the synthetic peptide used for immunization is 80-99% homologues with the sequence in <i>Brassica rapa</i> , <i>Brassica napus</i> , <i>Nicotiana tabacum</i> , <i>Solanum lycopersicum</i> , <i>Solanum tuberosum</i> .<br>The sequence of the synthetic peptide used for immunization is 100% homologues with the sequence in TWINKY (AT1G30660). |

Research Use Only

For more species homologues information, please contact tech support at [tech@phytoab.com](mailto:tech@phytoab.com).

## Application Example



Recom: 5 ng, 15 ng and 50 ng recombinant protein containing the peptide for immunization and having a molecular mass of 43 kDa.

**Electrophoresis:** 12% SDS-PAGE

**Transfer:** blotting to NC (nitrocellulose) membrane for 1 h.

**Blocking:** 5% skim milk at RT or 4°C for 1 h.

**Primary antibody:** 1:1000 dilution overnight at 4°C.

**Secondary antibody:** 1:10000 dilution using Goat Anti-Rabbit IgG H&L (HRP) (Cat# PHY6000).

**Detection:** using chemiluminescence substrate and image were captured with CCD camera.