

Anti-Early light-induced protein 1, chloroplastic antibody

Catalog: PHY0842A

Product Information

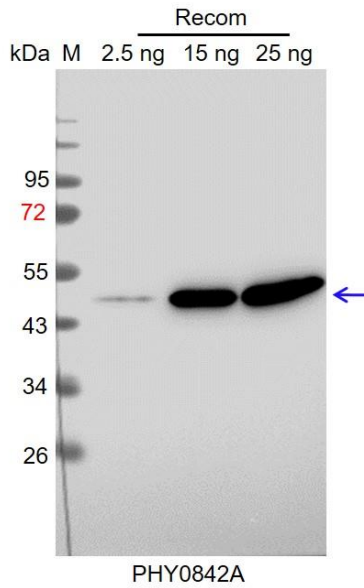
Description:	Rabbit polyclonal antibody
Background:	Arabidopsis Elip1 prevents excess accumulation of free chlorophyll by inhibiting the entire chlorophyll biosynthesis pathway (e.g. 5-aminolevulinate synthesis and Mg-protoporphyrin IX chelatase activity), and hence prevent photooxidative stress. It is Probably involved in the integration of pigments into the mature light-harvesting pigment-protein complexes.
Synonyms:	ELIP1, Arabidopsis Elip1, EARLY LIGHT-INDUCABLE PROTEIN, ELIP.
Immunogen:	KLH-conjugated synthetic peptide (13 aa from N terminal section) derived from <i>Arabidopsis thaliana</i> ELIP1 (AT3G22840).
Form:	Lyophilized
Quantity:	150 µg
Purification:	Immunogen affinity purified
Reconstitution:	Reconstitution with 150 µl of 0.01 M sterile PBS. "Note: please spin tube briefly prior to opening it to avoid any losses that might occur from lyophilized material adhering to the cap or sides of the tube".
Stability & Storage:	Use a manual defrost freezer and avoid repeated freeze-thaw cycles. 12 months from date of receipt, -20 to -70°C as supplied. 6 months, -20 to -70°C under sterile conditions after reconstitution. 1 month, 2 to 8°C under sterile conditions after reconstitution.
Shipping:	The product is shipped at 4°C. Upon receipt, store it immediately at the temperature recommended above.

Application Information

Recommended Dilution:	Western Blot (1:1000-1:2000) Note: Optimal dilutions/concentrations should be determined by the end user.
Expected / apparent MW:	20 kDa
Predicted Reactivity:	For more species homologues information, please contact tech support at tech@phytoab.com .

Research Use Only

Application Example



Recom: 2.5 ng, 15 ng and 25 ng recombinant protein containing the peptide for immunization and having a molecular mass of 48 kDa.

Electrophoresis: 12% SDS-PAGE

Transfer: blotting to NC (nitrocellulose) membrane for 1 h.

Blocking: 5% skim milk at RT or 4°C for 1 h.

Primary antibody: 1:1000 dilution overnight at 4°C.

Secondary antibody: 1:10000 dilution using Goat Anti-Rabbit IgG H&L (HRP) (Cat# PHY6000).

Detection: using chemiluminescence substrate and image were captured with CCD camera.