

Anti-HOZ protein antibody

Catalog: PHY2746A

Product Information

Description:	Rabbit polyclonal antibody
Background:	HOZ is a Dimeric β -barrel protein that is structurally related to the putative non-canonical heme oxygenase (HO) and is located in chloroplasts. May function additionally in the tetrapyrrole biosynthetic pathway.
Synonyms:	HOZ
Immunogen:	KLH-conjugated synthetic peptide (16 aa from C terminal section) derived from <i>Arabidopsis thaliana</i> HOZ (AT3G03890).
Form:	Lyophilized
Quantity:	150 μ g
Purification:	Immunogen affinity purified
Reconstitution:	Reconstitution with 150 μ l of 0.01 M sterile PBS. "Note: please spin tube briefly prior to opening it to avoid any losses that might occur from lyophilized material adhering to the cap or sides of the tube".
Stability & Storage:	Use a manual defrost freezer and avoid repeated freeze-thaw cycles. 12 months from date of receipt, -20 to -70°C as supplied. 6 months, -20 to -70°C under sterile conditions after reconstitution. 1 month, 2 to 8°C under sterile conditions after reconstitution.
Shipping:	The product is shipped at 4°C. Upon receipt, store it immediately at the temperature recommended above.

Application Information

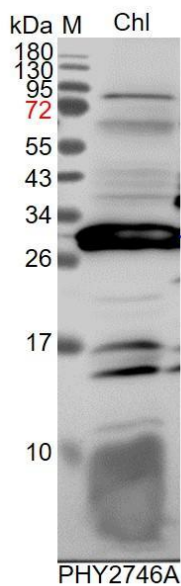
Recommended Dilution:	Western Blot (1:1000-1:2000) Note: Optimal dilutions/concentrations should be determined by the end user.
Expected / apparent MW:	35 / 31 kDa
Confirmed Reactivity:	<i>Arabidopsis thaliana</i>
Predicted Reactivity:	Among species analyzed, the sequence of the synthetic peptide used for immunization is 100% homologues with the sequence in <i>Brassica napus</i> , <i>Triticum aestivum</i> , <i>Hordeum vulgare</i> , <i>Oryza sativa</i> , and 80-99% homologues with the sequence in <i>Glycine max</i> , <i>Gossypium raimondii</i> ,

Research Use Only

Zea mays, *Panicum virgatum*, *Setaria viridis*, *Sorghum bicolor*, *Vitis vinifera*, *Populus trichocarpa*, *Nicotiana tabacum*, *Medicago truncatula*, *Physcomitrium patens*, *Solanum tuberosum*, *Solanum lycopersicum*, *Cucumis sativus*, *Spinacia oleracea*.

For more species homologues information, please contact tech support at tech@phytoab.com.

Application Example



Chl: 8 μ g total chloroplast protein from *Arabidopsis thaliana*.

Electrophoresis: 15% SDS-PAGE

Transfer: blotting to NC (nitrocellulose) membrane for 1 h.

Blocking: 5% skim milk at RT or 4°C for 1 h.

Primary antibody: 1:2000 dilution overnight at 4°C.

Secondary antibody: 1:10000 dilution using Goat Anti-Rabbit IgG H&L (HRP) (Cat# PHY6000).

Detection: using chemiluminescence substrate and image were captured with CCD camera.