

Anti-Expressed protein antibody

Catalog: PHY1569A

Product Information

Description:	Rabbit polyclonal antibody
Background:	mTERFs are including five groups. The fourth "mitochondrion-associated" cluster has three members (AT1G62150, AT2G44020, AT5G64950), whose products (mTERF20-22) are known or predicted to be located in mitochondria or in the nucleus.
Synonyms:	AT2G44020
Immunogen:	KLH-conjugated synthetic peptide (15 aa from N terminal section) derived from <i>Arabidopsis thaliana</i> AT2G44020.
Form:	Lyophilized
Quantity:	150 µg
Purification:	Immunogen affinity purified
Reconstitution:	Reconstitution with 150 µl of 0.01 M sterile PBS. "Note: please spin tube briefly prior to opening it to avoid any losses that might occur from lyophilized material adhering to the cap or sides of the tube".
Stability & Storage:	Use a manual defrost freezer and avoid repeated freeze-thaw cycles. 12 months from date of receipt, -20 to -70°C as supplied. 6 months, -20 to -70°C under sterile conditions after reconstitution. 1 month, 2 to 8°C under sterile conditions after reconstitution.
Shipping:	The product is shipped at 4°C. Upon receipt, store it immediately at the temperature recommended above.

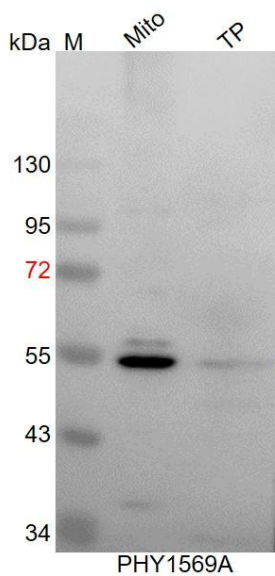
Application Information

Recommended Dilution:	Western Blot (1:1000-1:2000) Note: Optimal dilutions/concentrations should be determined by the end user.
Expected / apparent MW:	58 / 55 kDa
Confirmed Reactivity:	<i>Arabidopsis thaliana</i>
Predicted Reactivity:	Among species analyzed species, the sequence of the synthetic peptide used for immunization is 100% homologues with the

Research Use Only

sequence in *Brassica rapa*, *Brassica napus*, 80-99% homologues with the sequence in *Gossypium raimondii*, *Nicotiana tabacum*, *Solanum lycopersicum*, *Solanum tuberosum*, *Gossypium raimondii*, *Vitis vinifera*, *Glycine max*, *Spinacia oleracea*, *Nicotiana tabacum*, *Cucumis sativus*, *Medicago truncatula*, *Populus trichocarpa*.
For more species homologues information, please contact tech support at tech@phytoab.com.

Application Example



Mit: 9 µg mitochondria protein from *Arabidopsis thaliana*.

TP: 15 µg total protein from *Arabidopsis thaliana*.

Electrophoresis: 12% SDS-PAGE

Transfer: blotting to NC (nitrocellulose) membrane for 1 h.

Blocking: 5% skim milk at RT or 4°C for 1 h.

Primary antibody: 1:1000 dilution overnight at 4°C.

Secondary antibody: 1:10000 dilution using Goat Anti-Rabbit IgG H&L (HRP) (Cat# PHY6000).

Detection: using chemiluminescence substrate and image were captured with CCD camera.