

# Anti-Membrane-associated protein VIPP1, chloroplastic antibody

Catalog: PHY2589A

## Product Information

<b>Description:</b>	Rabbit polyclonal antibody
<b>Background:</b>	VIPP1 protein in photosynthetic organisms is homologous to bacterial PspA, which protects plasma membrane integrity upon stresses. VIPP1 may be involved in the formation of thylakoids and maintenance of chloroplast envelopes. VIPP1 (AT1G65260) is also termed as pTAC4.
<b>Synonyms:</b>	VIPP1, IM30, PLASTID TRANSCRIPTIONALLY ACTIVE 4, PTAC4, VESICLE-INDUCING PROTEIN IN PLASTIDS 1
<b>Immunogen:</b>	KLH-conjugated synthetic peptide (18 aa from Central section) derived from <i>Arabidopsis thaliana</i> VIPP1 (AT1G65260).
<b>Form:</b>	Lyophilized
<b>Quantity:</b>	150 µg
<b>Purification:</b>	Immunogen affinity purified
<b>Reconstitution:</b>	Reconstitution with 150 µl of 0.01 M sterile PBS. "Note: please spin tube briefly prior to opening it to avoid any losses that might occur from lyophilized material adhering to the cap or sides of the tube".
<b>Stability &amp; Storage:</b>	Use a manual defrost freezer and avoid repeated freeze-thaw cycles. 12 months from date of receipt, -20 to -70°C as supplied. 6 months, -20 to -70°C under sterile conditions after reconstitution. 1 month, 2 to 8°C under sterile conditions after reconstitution.
<b>Shipping:</b>	The product is shipped at 4°C. Upon receipt, store it immediately at the temperature recommended above.

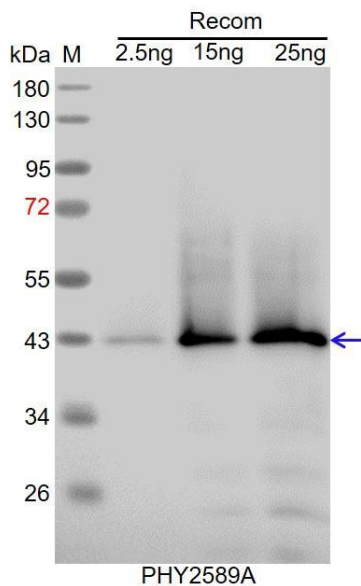
## Application Information

<b>Recommended Dilution:</b>	Western Blot (1:1000-1:2000) Note: Optimal dilutions/concentrations should be determined by the end user.
<b>Expected / apparent MW:</b>	36 kDa
<b>Predicted Reactivity:</b>	Among species analyzed, the sequence of the synthetic peptide used for immunization is 100% homologues with the sequence in <i>Brassica</i>

Research Use Only

*rapa*, *Brassica napus*, and 80-99% homologues with the sequence in *Solanum tuberosum*, *Nicotiana tabacum*, *Populus trichocarpa*, *Cucumis sativus*, *Oryza sativa*, *Medicago truncatula*, *Triticum aestivum*, *Zea mays*, *Physcomitrium patens*, *Gossypium raimondii*, *Hordeum vulgare*, *Glycine max*, *Vitis vinifera*, *Solanum lycopersicum*. For more species homologues information, please contact tech support at [tech@phytoab.com](mailto:tech@phytoab.com).

## Application Example



Recom: 2.5 ng, 15 ng and 25 ng recombinant protein containing the peptide for immunization and having a molecular mass of 43 kDa.

**Electrophoresis:** 12% SDS-PAGE

**Transfer:** blotting to NC (nitrocellulose) membrane for 1 h.

**Blocking:** 5% skim milk at RT or 4°C for 1 h.

**Primary antibody:** 1:1000 dilution overnight at 4°C.

**Secondary antibody:** 1:10000 dilution using Goat Anti-Rabbit IgG H&L (HRP) (Cat# PHY6000).

**Detection:** using chemiluminescence substrate and image were captured with CCD camera.