

Anti-ATP synthase subunit 2, mitochondrial, C-terminal antibody

Catalog: PHY1414A

Product Information

Description:	Rabbit polyclonal antibody
Background:	Mitochondrial F ₀ F ₁ -ATP synthase is also called Complex V and it synthesizes ATP from ADP and Pi using the proton motive force created by respiratory electron transport. ATP2 (AT5G08670/AT5G08680/AT5G08690) is a subunit of mitochondrial F ₀ F ₁ -ATP synthase in <i>Arabidopsis</i> .
Synonyms:	AtpB, ATP2
Immunogen:	KLH-conjugated synthetic peptide (15 aa from C terminal section) derived from <i>Arabidopsis thaliana</i> AtpB (AT5G08670, AT5G08680, AT5G08690).
Form:	Lyophilized
Quantity:	150 µg
Purification:	Immunogen affinity purified
Reconstitution:	Reconstitution with 150 µl of 0.01 M sterile PBS. "Note: please spin tube briefly prior to opening it to avoid any losses that might occur from lyophilized material adhering to the cap or sides of the tube".
Stability & Storage:	Use a manual defrost freezer and avoid repeated freeze-thaw cycles. 12 months from date of receipt, -20 to -70°C as supplied. 6 months, -20 to -70°C under sterile conditions after reconstitution. 1 month, 2 to 8°C under sterile conditions after reconstitution.
Shipping:	The product is shipped at 4°C. Upon receipt, store it immediately at the temperature recommended above.

Application Information

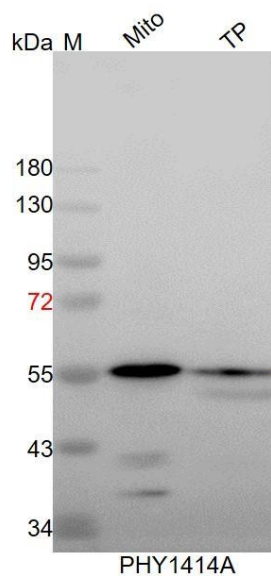
Recommended Dilution:	Western Blot (1:1000-1:2000) Note: Optimal dilutions/concentrations should be determined by the end user.
Expected / apparent MW:	60 / 55 kDa
Confirmed Reactivity:	<i>Arabidopsis thaliana</i>
Predicted Reactivity:	Among species analyzed, the sequence of the synthetic peptide used

Research Use Only

for immunization is 80-99% homologues with the sequence in *Vitis vinifera*, *Solanum tuberosum*, *Solanum lycopersicum*, *Nicotiana tabacum*, *Medicago truncatula*, *Glycine max*, *Cucumis sativus*, *Oryza sativa*, *Zea mays*, *Populus trichocarpa*, *Gossypium raimondii*, *Setaria viridis*, *Panicum virgatum*, *Nicotiana tabacum*, *Sorghum bicolor*, *Brassica napus*, *Brassica rapa*.

For more species homologues information, please contact tech support at tech@phytoab.com.

Application Example



Mito: 9 μ g mitochondria protein from *Arabidopsis thaliana*.

TP: 15 μ g total protein from *Arabidopsis thaliana*.

Electrophoresis: 10% SDS-PAGE

Transfer: blotting to NC (nitrocellulose) membrane for 1 h.

Blocking: 5% skim milk at RT or 4°C for 1 h.

Primary antibody: 1:1000 dilution overnight at 4°C.

Secondary antibody: 1:10000 dilution using Goat Anti-Rabbit IgG H&L (HRP) (Cat# PHY6000).

Detection: using chemiluminescence substrate and image were captured with CCD camera.