

Anti-RNA polymerase subunit beta" antibody

Catalog: PHY3040A

Product Information

Description:	Rabbit polyclonal antibody
Background:	In chloroplasts, transcription of plastid genes is mediated by two types of RNA polymerase: plastid-encoded RNA polymerase (PEP) and nuclear encoded RNA polymerase (NEP). PEP is composed of four core subunits (α , β , β' , β'') and a promoter recognition subunit (σ factor). RpoC2 (ATCG00170) is the β'' subunit of PEP.
Synonyms:	RpoC2, RPOC2
Immunogen:	KLH-conjugated synthetic peptide (20 aa from N terminal section) derived from <i>Arabidopsis thaliana</i> RpoC2 (ATCG00170).
Form:	Lyophilized
Quantity:	150 μ g
Purification:	Immunogen affinity purified
Reconstitution:	Reconstitution with 150 μ l of 0.01 M sterile PBS. "Note: please spin tube briefly prior to opening it to avoid any losses that might occur from lyophilized material adhering to the cap or sides of the tube".
Stability & Storage:	Use a manual defrost freezer and avoid repeated freeze-thaw cycles. 12 months from date of receipt, -20 to -70°C as supplied. 6 months, -20 to -70°C under sterile conditions after reconstitution. 1 month, 2 to 8°C under sterile conditions after reconstitution.
Shipping:	The product is shipped at 4°C. Upon receipt, store it immediately at the temperature recommended above.

Application Information

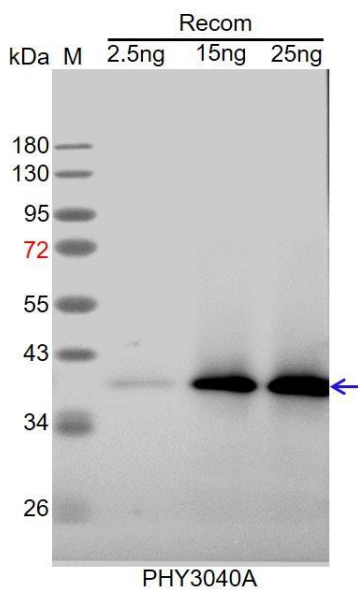
Recommended Dilution:	Western Blot (1:1000-1:2000) Note: Optimal dilutions/concentrations should be determined by the end user.
Expected / apparent MW:	156 kDa
Predicted Reactivity:	Among species analyzed, the sequence of the synthetic peptide used for immunization is 100% homologues with the sequence in <i>Solanum tuberosum</i> , <i>Vitis vinifera</i> , <i>Cucumis sativus</i> , <i>Gossypium raimondii</i> ,

Research Use Only

Nicotiana tabacum, *Solanum lycopersicum*, *Populus trichocarpa*, *Glycine max*, *Brassica napus*, *Brassica rapa*, *Medicago truncatula*, *Spinacia oleracea*, *Physcomitrium patens*, *Panicum virgatum*, and 80-99% homologues with the sequence in *Zea mays*, *Setaria viridis*, *Sorghum bicolor*, *Oryza sativa*, *Triticum aestivum*, *Hordeum vulgare*, *Leymus chinensis*.

For more species homologues information, please contact tech support at tech@phytoab.com.

Application Example



Recom: 2.5 ng, 15 ng and 25 ng recombinant protein containing the peptide for immunization and having a molecular mass of 38 kDa.

Electrophoresis: 12% SDS-PAGE

Transfer: blotting to NC (nitrocellulose) membrane for 1 h.

Blocking: 5% skim milk at RT or 4°C for 1 h.

Primary antibody: 1:1000 dilution overnight at 4°C.

Secondary antibody: 1:10000 dilution using Goat Anti-Rabbit IgG H&L (HRP) (Cat# PHY6000).

Detection: using chemiluminescence substrate and image were captured with CCD camera.