

Anti-GLUTATHIONE PEROXIDASE 1/2/7 antibody

Catalog: PHY2963A

Product Information

Description:	Rabbit polyclonal antibody
Background:	The plant glutathione peroxidase (GPX) family consists of multiple isoenzymes with distinct subcellular locations which exhibit different tissue-specific expression patterns and environmental stress responses. GPX1 (AT2G25080) is one of the subunit.
Synonyms:	GPX1/2/7, ATGPX1/2/7, GLUTATHIONE PEROXIDASE 1/2/7, GPXL1/2/7
Immunogen:	KLH-conjugated synthetic peptide of (19 aa from central section) derived from <i>Arabidopsis thaliana</i> GPX1 (AT2G25080), GPX2 (AT2G31570) and GPX7 (AT4G31870).
Form:	Lyophilized
Quantity:	150 µg
Purification:	Immunogen affinity purified
Reconstitution:	Reconstitution with 150 µl of 0.01 M sterile PBS. "Note: please spin tube briefly prior to opening it to avoid any losses that might occur from lyophilized material adhering to the cap or sides of the tube".
Stability & Storage:	Use a manual defrost freezer and avoid repeated freeze-thaw cycles. 12 months from date of receipt, -20 to -70°C as supplied. 6 months, -20 to -70°C under sterile conditions after reconstitution. 1 month, 2 to 8°C under sterile conditions after reconstitution.
Shipping:	The product is shipped at 4°C. Upon receipt, store it immediately at the temperature recommended above.

Application Information

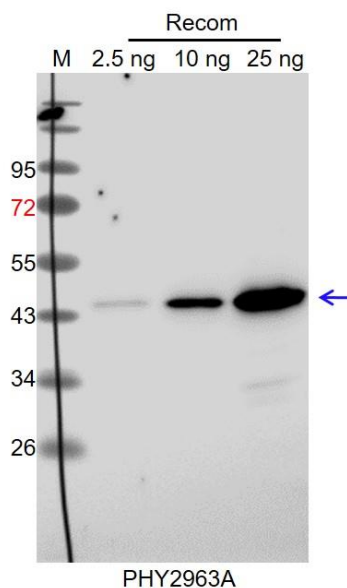
Recommended Dilution:	Western Blot (1:1000-1:2000) Note: Optimal dilutions/concentrations should be determined by the end user.
Expected / apparent MW:	26 kDa
Predicted Reactivity:	Among species analyzed, the sequence of the synthetic peptide used for immunization is 100% homologues with the sequence in <i>Cucumis</i>

Research Use Only

sativus, *Brassica napus*, *Brassica rapa*, 80-99% homologues with the sequence in *Oryza sativa*, *Glycine max*, *Zea mays*, *Physcomitrium patens*, *Vitis vinifera*, *Gossypium raimondii*, *Solanum lycopersicum*, *Solanum tuberosum*, *Medicago truncatula*, *Nicotiana tabacum*, *Sorghum bicolor*, *Setaria viridis*, *Hordeum vulgare*, *Panicum virgatum*, *Triticum aestivum*.

For more species homologues information, please contact tech support at tech@phytoab.com.

Application Example



Recom: 2.5 ng, 10 ng and 25 ng recombinant protein containing the peptide for immunization and having a molecular mass of 45 kDa.

Electrophoresis: 12% SDS-PAGE

Transfer: blotting to NC (nitrocellulose) membrane for 1 h.

Blocking: 5% skim milk at RT or 4°C for 1 h.

Primary antibody: 1:1000 dilution overnight at 4°C.

Secondary antibody: 1:10000 dilution using Goat Anti-Rabbit IgG H&L (HRP) (Cat# PHY6000).

Detection: using chemiluminescence substrate and image were captured with CCD camera.