

Anti-Aspartate carbamoyltransferase, chloroplastic, C-terminal antibody

Catalog: PHY2813A

Product Information

Description:	Rabbit polyclonal antibody
Background:	PYRB is an aspartate carbamoyltransferase catalyzing the second step in the de novo pyrimidine ribonucleotide biosynthesis.
Synonyms:	PYRB, ACT, ASPARTATE TRANSCARBAMOYLASE, PYRIMIDINE B
Immunogen:	KLH-conjugated synthetic peptide (16 aa from C terminal section) derived from <i>Arabidopsis thaliana</i> PYRB (AT3G20330).
Form:	Lyophilized
Quantity:	150 µg
Purification:	Immunogen affinity purified
Reconstitution:	Reconstitution with 150 µl of 0.01 M sterile PBS. "Note: please spin tube briefly prior to opening it to avoid any losses that might occur from lyophilized material adhering to the cap or sides of the tube".
Stability & Storage:	Use a manual defrost freezer and avoid repeated freeze-thaw cycles. 12 months from date of receipt, -20 to -70°C as supplied. 6 months, -20 to -70°C under sterile conditions after reconstitution. 1 month, 2 to 8°C under sterile conditions after reconstitution.
Shipping:	The product is shipped at 4°C. Upon receipt, store it immediately at the temperature recommended above.

Application Information

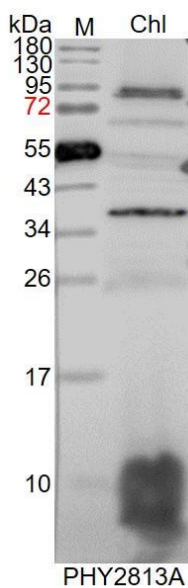
Recommended Dilution:	Western Blot (1:1000-1:2000) Note: Optimal dilutions/concentrations should be determined by the end user.
Expected / apparent MW:	43 / 36 kDa
Confirmed Reactivity:	<i>Arabidopsis thaliana</i>
Predicted Reactivity:	Among species analyzed, the sequence of the synthetic peptide used for immunization is 100% homologues with the sequence in <i>Brassica napus</i> , and 80-99% homologues with the sequence in <i>Brassica rapa</i> , <i>Glycine max</i> , <i>Gossypium raimondii</i> , <i>Medicago truncatula</i> , <i>Populus</i>

Research Use Only

trichocarpa, Zea mays, Triticum aestivum, Hordeum vulgare, Panicum virgatum, Setaria viridis, Solanum tuberosum, Nicotiana tabacum, Solanum lycopersicum, Oryza sativa, Spinacia oleracea, Cucumis sativus, Physcomitrium patens, Chlamydomonas reinhardtii, Vitis vinifera.

For more species homologues information, please contact tech support at tech@phytoab.com.

Application Example



Chl: 8 μ g total chloroplast protein from *Arabidopsis thaliana*.

Electrophoresis: 12% SDS-PAGE

Transfer: blotting to NC (nitrocellulose) membrane for 1 h.

Blocking: 5% skim milk at RT or 4°C for 1 h.

Primary antibody: 1:1000 dilution overnight at 4°C.

Secondary antibody: 1:10000 dilution using Goat Anti-Rabbit IgG H&L (HRP) (Cat# PHY6000).

Detection: using chemiluminescence substrate and image were captured with CCD camera.