

Anti-Alcohol dehydrogenase 1 antibody

Catalog: PHY1347A

Product Information

Description:	Rabbit polyclonal antibody
Background:	ADH1 is a Zn-binding enzyme that acts as a dimer and relies on a NAD(P) co-factor to interconvert ethanol and acetaldehyde. ADH catalyzes the reduction of acetaldehyde using NADH as reductant. The protein undergoes thiolation following treatment with the oxidant tert-butylhydroperoxide.
Synonyms:	ADH1, ADH, ALCOHOL DEHYDROGENASE, ALCOHOL DEHYDROGENASE 1, ARABIDOPSIS THALIANA ALCOHOL DEHYDROGENASE, ATADH, ATADH1
Immunogen:	KLH-conjugated synthetic peptide (14 aa from C terminal section) derived from <i>Arabidopsis thaliana</i> ADH1 (AT1G77120).
Form:	Lyophilized
Quantity:	150 µg
Purification:	Immunogen affinity purified
Reconstitution:	Reconstitution with 150 µl of 0.01 M sterile PBS. "Note: please spin tube briefly prior to opening it to avoid any losses that might occur from lyophilized material adhering to the cap or sides of the tube".
Stability & Storage:	Use a manual defrost freezer and avoid repeated freeze-thaw cycles. 12 months from date of receipt, -20 to -70°C as supplied. 6 months, -20 to -70°C under sterile conditions after reconstitution. 1 month, 2 to 8°C under sterile conditions after reconstitution.
Shipping:	The product is shipped at 4°C. Upon receipt, store it immediately at the temperature recommended above.

Application Information

Recommended Dilution:	Western Blot (1:1000-1:2000) Note: Optimal dilutions/concentrations should be determined by the end user.
Expected / apparent MW:	41 / 43 kDa
Confirmed Reactivity:	<i>Arabidopsis thaliana</i>

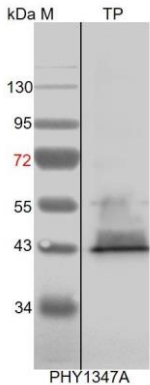
Research Use Only

Predicted Reactivity:

The sequence of the synthetic peptide used for immunization is 86% homologues with the sequence in ADH2 (AT5G43940).

For more species homologues information, please contact tech support at tech@phytoab.com.

Application Example



TP: 30 µg total protein from *Arabidopsis thaliana*.

Electrophoresis: 12% SDS-PAGE

Transfer: blotting to NC (nitrocellulose) membrane for 1 h.

Blocking: 5% skim milk at RT or 4°C for 1 h.

Primary antibody: 1:1000 dilution overnight at 4°C.

Secondary antibody: 1:10000 dilution using Goat Anti-Rabbit IgG

H&L(HRP) (Cat# PHY6000).

Detection: using chemiluminescence substrate and image were captured with CCD camera.