

Anti-Probable mitochondrial-processing peptidase subunit alpha-1, mitochondrial, C-terminal antibody

Catalog: PHY1411S

Product Information

Description:	Rabbit polyclonal antibody
Background:	Mitochondrial ubiquinol-cytochrome c oxidoreductase is also called complex III and it accepts electron from quinol and transferred to cytochrome c. In <i>Arabidopsis</i> mitochondria, ubiquinol-cytochrome c oxidoreductase contains 10 subunits. MPP alpha (AT1G51980) is one of the subunit of Complex III.
Synonyms:	AT1G51980
Immunogen:	KLH-conjugated synthetic peptide (15 aa from C terminal section) derived from <i>Arabidopsis thaliana</i> AT1G51980.
Form:	Lyophilized
Quantity:	150 µg
Purification:	Serum Peptide affinity form antibody available upon request at info@phytoab.com .
Reconstitution:	Reconstitution with 150 µl of sterile water. "Note: please spin tube briefly prior to opening it to avoid any losses that might occur from lyophilized material adhering to the cap or sides of the tube".
Stability & Storage:	Use a manual defrost freezer and avoid repeated freeze-thaw cycles. 12 months from date of receipt, -20 to -70°C as supplied. 6 months, -20 to -70°C under sterile conditions after reconstitution. 1 month, 2 to 8°C under sterile conditions after reconstitution.
Shipping:	The product is shipped at 4°C. Upon receipt, store it immediately at the temperature recommended above.

Application Information

Recommended Dilution:	Western Blot (1:1000-1:2000) Note: Optimal dilutions/concentrations should be determined by the end user.
Expected/apparent MW:	54Da
Confirmed Reactivity:	<i>Arabidopsis thaliana</i>

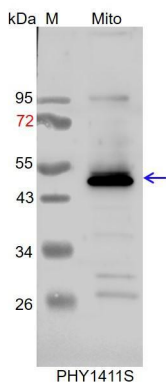
Research Use Only

Predicted Reactivity:

Among species analyzed, the sequence of the synthetic peptide used for immunization is 80-99% homologues with the sequence in *Brassica napus*.

For more species homologues information, please contact tech support at tech@phytoab.com.

Application Example



Mito: 10 µg mitochondria protein from *Arabidopsis thaliana*.

Electrophoresis: 15% SDS-PAGE

Transfer: blotting to NC (nitrocellulose) membrane for 1 h.

Blocking: 5% skim milk at RT or 4°C for 1 h.

Primary antibody: 1:1000 dilution overnight at 4°C.

Secondary antibody: 1:10000 dilution using Goat Anti-Rabbit IgG

H&L(HRP) (Cat# PHY6000).

Detection: using chemiluminescence substrate and image were captured

with CCD camera.