

Anti-Translocase of chloroplast 120, chloroplastic antibody

Catalog: PHY0466A

Product Information

Description:	Rabbit polyclonal antibody
Background:	TOC120 is a component of TOC complex, plastid protein import machinery. It functions redundantly with TOC132 in the import of non-photosynthetically-related proteins into plastids. In <i>Arabidopsis thaliana</i> , four psToc159 homologs are identified, termed atToc159 (AT4G02510), atToc132 (AT2G16640), atToc120 (AT3G16620) and atToc90 (AT5G20300).
Synonyms:	TOC120, ARABIDOPSIS THALIANA TRANSLOCON OUTER COMPLEX PROTEIN 120, ATTOC120, TRANSLOCON OUTER COMPLEX PROTEIN 120
Immunogen:	KLH-conjugated synthetic peptide (15 aa from N terminal section) derived from <i>Arabidopsis thaliana</i> TOC120 (AT3G16620).
Form:	Lyophilized
Quantity:	150 µg
Purification:	Immunogen affinity purified
Reconstitution:	Reconstitution with 150 µl of 0.01M sterile PBS. "Note: please spin tube briefly prior to opening it to avoid any losses that might occur from lyophilized material adhering to the cap or sides of the tube".
Stability &	Use a manual defrost freezer and avoid repeated freeze-thaw cycles.
Storage:	12 months from date of receipt, -20 to -70°C as supplied. 6 months, -20 to -70°C under sterile conditions after reconstitution. 1 month, 2 to 8°C under sterile conditions after reconstitution.
Shipping:	The product is shipped at 4°C. Upon receipt, store it immediately at the temperature recommended above.

Application Information

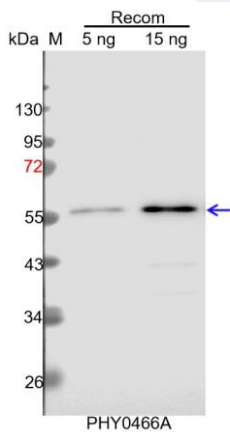
Recommended Dilution:	Western Blot (1:1000-1:2000) Note: Optimal dilutions/concentrations should be determined by the end user.
Expected / apparent MW:	120 kDa

Research Use Only

Confirmed Reactivity: Coming soon

Predicted Reactivity: For more species homologues information, please contact tech support at tech@phytoab.com.

Application Example



Recom: 5 ng and 15 ng recombinant protein containing the peptide for immunization and having a molecular mass of 57 kDa.

Electrophoresis: 12% SDS-PAGE

Transfer: blotting to NC (nitrocellulose) membrane for 1 h.

Blocking: 5% skim milk at RT or 4°C for 1 h.

Primary antibody: 1:1000 dilution overnight at 4°C.

Secondary antibody: 1:10000 dilution using Goat Anti-Rabbit IgG H&L (HRP) (Cat# PHY6000).

Detection: using chemiluminescence substrate and image were captured with CCD camera.