

Anti-RNA polymerase subunit beta antibody

Catalog: PHY1701

Product Information

Description:	Mouse monoclonal (Clone:17P12) antibody
Background:	In chloroplasts, transcription of plastid genes is mediated by two types of RNA polymerase: plastid-encoded RNA polymerase (PEP) and nuclear encoded RNA polymerase (NEP). PEP is composed of four core subunits (α , β , β' , β'') and a promoter recognition subunit (σ factor). RpoB (ATCG00190) is the β subunit of PEP.
Synonyms:	RpoB, RNA POLYMERASE SUBUNIT BETA
Immunogen:	Recombinant protein of RpoB (537-1072 aa) derived from <i>Arabidopsis thaliana</i> ATCG00190.
Form:	Lyophilized
Quantity:	150 μ g
Purification:	Protein A purified
Reconstitution:	Reconstitution with 150 μ l of 0.01M sterile PBS. "Note: please spin tube briefly prior to opening it to avoid any losses that might occur from lyophilized material adhering to the cap or sides of the tube".
Stability & Storage:	Use a manual defrost freezer and avoid repeated freeze-thaw cycles. 12 months from date of receipt, -20 to -70°C as supplied. 6 months, -20 to -70°C under sterile conditions after reconstitution. 1 month, 2 to 8°C under sterile conditions after reconstitution.
Shipping:	The product is shipped at 4°C. Upon receipt, store it immediately at the temperature recommended above.
Product Citations:	Ding S, et al., Molecular Plant, September 2019, Vol. 12, pp. 1259-1277.

Application Information

Recommended Dilution:	Western Blot (1:1000-1:2000) Note: Optimal dilutions/concentrations should be determined by the end user.
Expected / apparent MW:	121 kDa
Confirmed Reactivity:	<i>Arabidopsis thaliana</i>

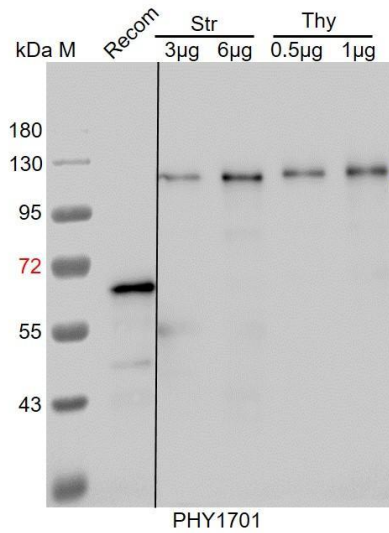
Research Use Only

Predicted Reactivity:

For more species homologues information, please contact tech support at tech@phytoab.com.

Application Example

Example1:



Recom: 1 ng recombinant protein containing the peptide for immunization and having a molecular mass of 70 kDa.

Str: 3 µg and 6 µg stromal protein from *Arabidopsis thaliana*, respectively.

Thy: thylakoid membrane protein from *Arabidopsis thaliana* containing 0.5 µg, and 1 µg of chlorophyll, respectively.

Electrophoresis: 10% SDS-PAGE

Transfer: blotting to NC (nitrocellulose) membrane for 1h.

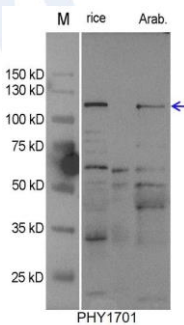
Blocking: 5% skim milk at RT or 4°C for 1h.

Primary antibody: 1:1000 dilution overnight at 4°C.

Secondary antibody: 1:5000 dilution using Goat Anti-Mouse IgG H&L (HRP).

Detection: using chemiluminescence substrate and image were captured with CCD camera.

Example2:



rice: 50 µg total protein from *Oryza Sativa* leaf

Arab: 100 µg total protein from *Arabidopsis thaliana* leaf.

Electrophoresis: 10% SDS-PAGE

Transfer: blotting to NC (nitrocellulose) membrane for 1h.

Blocking: 5% skim milk at RT or 4°C for 1h.

Primary antibody: 1:1000 dilution overnight at 4°C.

Secondary antibody: 1:5000 dilution using Goat Anti-Mouse IgG H&L (HRP).

Detection: using chemiluminescence substrate and image were captured with CCD camera.