

# Anti-L-ascorbate peroxidase 1, cytosolic antibody

Catalog: PHY3183S

## Product Information

<b>Description:</b>	Rabbit polyclonal antibody
<b>Background:</b>	APX1 is a cytosolic ascorbate peroxidase. Ascorbate peroxidases are enzymes that scavenge hydrogen peroxide in plant cells. Eight types of APX have been described for Arabidopsis: three cytosolic (APX1, APX2, APX6), two chloroplastic types (stromal sAPX, thylakoid tAPX), and three microsomal (APX3, APX4, APX5) isoforms.
<b>Synonyms:</b>	APX1, ASCORBATE PEROXIDASE 1, ATAPX01, ATAPX1, CS1, MATERNAL EFFECT EMBRYO ARREST 6, MEE6
<b>Immunogen:</b>	KLH-conjugated synthetic peptide (15 aa from central section) derived from <i>Arabidopsis thaliana</i> APX1 (AT1G07890).
<b>Form:</b>	Lyophilized
<b>Quantity:</b>	150 µg
<b>Purification:</b>	Serum Peptide affinity form antibody available upon request at <a href="mailto:info@phytoab.com">info@phytoab.com</a> .
<b>Reconstitution:</b>	Reconstitution with 150 µl of sterile water. "Note: please spin tube briefly prior to opening it to avoid any losses that might occur from lyophilized material adhering to the cap or sides of the tube".
<b>Stability &amp;</b>	Use a manual defrost freezer and avoid repeated freeze-thaw cycles.
<b>Storage:</b>	12 months from date of receipt, -20 to -70°C as supplied. 6 months, -20 to -70°C under sterile conditions after reconstitution. 1 month, 2 to 8°C under sterile conditions after reconstitution.
<b>Shipping:</b>	The product is shipped at 4°C. Upon receipt, store it immediately at the temperature recommended above.

## Application Information

<b>Recommended Dilution:</b>	Western Blot (1:1000-1:2000) Note: Optimal dilutions/concentrations should be determined by the end user.
<b>Expected / apparent MW:</b>	28 / 27 kDa

Research Use Only

**Confirmed Reactivity:**

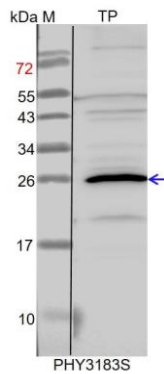
*Arabidopsis thaliana*

**Predicted Reactivity:**

Among species analyzed, the sequence of the synthetic peptide used for immunization is 100% homologues with the sequence in *Hordeum vulgare*, *Brassica rapa*, *Brassica napus*, *Zea mays*, *Setaria viridis*, *Triticum aestivum*, *Panicum virgatum*, *Sorghum bicolor*, and 80-99% homologues with the sequence in *Glycine max*, *Gossypium raimondii*, *Vitis vinifera*, *Medicago truncatula*, *Populus trichocarpa*, *Cucumis sativus*.

For more species homologues information, please contact tech support at [tech@phytoab.com](mailto:tech@phytoab.com).

## Application Example



TP: 20 µg total protein from *Arabidopsis thaliana*.

**Electrophoresis:** 15% SDS-PAGE

**Transfer:** blotting to NC (nitrocellulose) membrane for 1 h.

**Blocking:** 5% skim milk at RT or 4°C for 1 h.

**Primary antibody:** 1:2000 dilution overnight at 4°C.

**Secondary antibody:** 1:10000 dilution using Goat Anti-Rabbit IgG H&L(HRP) (Cat# PHY6000).

**Detection:** using chemiluminescence substrate and image were captured with CCD camera.