

# Anti-ADP-ribosylation factor antibody

Catalog: PHY1012S

## Product Information

<b>Description:</b>	Rabbit polyclonal antibody
<b>Background:</b>	ArfA1A/B/C/D/E/F is a member of ARF GTPase family. <i>Arabidopsis thaliana</i> has 21 members of this family, known to be essential for vesicle coating and uncoating and functions in GTP-binding.
<b>Synonyms:</b>	ArfA
<b>Immunogen:</b>	KLH-conjugated synthetic peptide (26 aa from C terminal section) derived from <i>Arabidopsis thaliana</i> ArfA1A (AT1G23490), ArfA1B (AT5G14670), ArfA1C (AT2G47170), ArfA1D (AT1G70490), ArfA1E (AT3G62290), ArfA1F (AT1G10630).
<b>Form:</b>	Lyophilized
<b>Quantity:</b>	150 µg
<b>Purification:</b>	Serum Peptide affinity form antibody available upon request at <a href="mailto:info@phytoab.com">info@phytoab.com</a> .
<b>Reconstitution:</b>	Reconstitution with 150 µl of sterile water. "Note: please spin tube briefly prior to opening it to avoid any losses that might occur from lyophilized material adhering to the cap or sides of the tube".
<b>Stability &amp; Storage:</b>	Use a manual defrost freezer and avoid repeated freeze-thaw cycles. 12 months from date of receipt, -20 to -70°C as supplied. 6 months, -20 to -70°C under sterile conditions after reconstitution. 1 month, 2 to 8°C under sterile conditions after reconstitution.
<b>Shipping:</b>	The product is shipped at 4°C. Upon receipt, store it immediately at the temperature recommended above.

## Application Information

<b>Recommended Dilution:</b>	Western Blot (1:1000-1:2000) Note: Optimal dilutions/concentrations should be determined by the end user.
<b>Expected / apparent MW:</b>	21 / 18 kDa
<b>Confirmed Reactivity:</b>	<i>Arabidopsis thaliana</i>

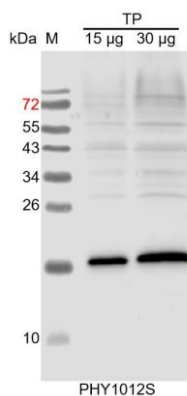
Research Use Only

### Predicted Reactivity:

Among species analyzed, the sequence of the synthetic peptide used for immunization is 100% homologues with the sequence in *Setaria viridis*, *Spinacia oleracea*, *Vitis vinifera*, *Brassica napus*, *Solanum tuberosum*, *Oryza sativa*, *Sorghum bicolor*, *Hordeum vulgare*, *Panicum virgatum*, *Zea mays*, *Solanum lycopersicum*, *Gossypium raimondii*, *Glycine max*, *Triticum aestivum*, *Brassica rapa*, *Cucumis sativus*, *Medicago truncatula*, *Physcomitrium patens*, *Populus trichocarpa*, *Nicotiana tabacum*, and 80-99% homologues with the sequence in *Chlamydomonas reinhardtii*.

For more species homologues information, please contact tech support at [tech@phytoab.com](mailto:tech@phytoab.com).

### Application Example



TP: 15 µg and 30 µg total protein from *Arabidopsis thaliana*, respectively.

**Electrophoresis:** 15% SDS-PAGE

**Transfer:** blotting to NC (nitrocellulose) membrane for 1 h.

**Blocking:** 5% skim milk at RT or 4°C for 1 h.

**Primary antibody:** 1:2000 dilution overnight at 4°C.

**Secondary antibody:** 1:10000 dilution using Goat Anti-Rabbit IgG H&L (HRP) (Cat# PHY6000)

**Detection:** using chemiluminescence substrate and image were captured with CCD camera.