

# Anti-PsaK subunit of photosystem I antibody

Catalog: PHY2880S

## Product Information

<b>Description:</b>	Rabbit polyclonal antibody
<b>Background:</b>	Photosystem I (PSI) is a multisubunit complex that catalyses the final stage of the light reactions in chloroplasts. Plant photosystem I (PSI) consists of at least 18 different protein subunits and PsaK is a subunit with two transmembrane $\alpha$ -helices, which in cyanobacteria is located at the periphery of the complex. PsaK has a role in organizing the peripheral light-harvesting complexes on the core antenna of photosystem I.
<b>Synonyms:</b>	PsaK, Photosystem I reaction center subunit PsaK, chloroplastic, PSI-K, Photosystem I subunit K
<b>Immunogen:</b>	KLH-conjugated synthetic peptide of PsaK (17 aa from C terminal section) derived from <i>Arabidopsis thaliana</i> (AT1G30380).
<b>Form:</b>	Lyophilized
<b>Quantity:</b>	150 $\mu$ g
<b>Purification:</b>	Serum Peptide affinity form antibody available upon request at <a href="mailto:info@phytoab.com">info@phytoab.com</a> .
<b>Reconstitution:</b>	Reconstitution with 150 $\mu$ l of sterile water. "Note: please spin tube briefly prior to opening it to avoid any losses that might occur from lyophilized material adhering to the cap or sides of the tube".
<b>Stability &amp; Storage:</b>	Use a manual defrost freezer and avoid repeated freeze-thaw cycles. 12 months from date of receipt, -20 to -70°C as supplied. 6 months, -20 to -70°C under sterile conditions after reconstitution. 1 month, 2 to 8°C under sterile conditions after reconstitution.
<b>Shipping:</b>	The product is shipped at 4°C. Upon receipt, store it immediately at the temperature recommended above.

## Application Information

<b>Recommended Dilution:</b>	Western Blot (1:1000-1:4000) Note: Optimal dilutions/concentrations should be determined by the end user.
<b>Expected / apparent MW:</b>	13 / 8 kDa

Research Use Only

**Confirmed Reactivity:**

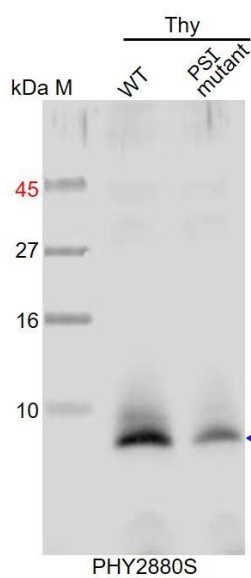
*Arabidopsis thaliana*

**Predicted Reactivity:**

Among species analyzed, the sequence of the synthetic peptide used for immunization is 100% homologues with the sequence in *Zea mays*, *Oryza sativa*, *Brassica rapa*, *Sorghum bicolor*, *Brassica napus*, and 80-99% homologues with the sequence in *Panicum virgatum*, *Setaria viridis*, *Triticum aestivum*, *Hordeum vulgare*, *Medicago truncatula*, *Vitis vinifera*, *Glycine max*, *Cucumis sativus*, *Spinacia oleracea*, *Nicotiana tabacum*, *Gossypium raimondii*, *Populus trichocarpa*, *Solanum lycopersicum*, *Solanum tuberosum*.

For more species homologues information, please contact tech support at [tech@phytoab.com](mailto:tech@phytoab.com).

## Application Example



Thy-WT is thylakoid membrane protein from WT of *Arabidopsis thaliana* containing 1 µg of chlorophyll.

Thy-PS I is thylakoid membrane protein from an *Arabidopsis* mutant with low accumulation of PS I containing 1 µg of chlorophyll.

**Electrophoresis:** Tricine-SDS-PAGE

**Transfer:** blotting to NC (nitrocellulose) membrane for 1 h.

**Blocking:** 5% skim milk at RT or 4°C for 1 h.

**Primary antibody:** 1:4000 dilution overnight at 4°C.

**Secondary antibody:** 1:10000 dilution using Goat Anti-Rabbit IgG &L (HRP) (Cat# PHY6000).

**Detection:** using chemiluminescence substrate and image were captured with CCD camera.