

Anti-30S ribosomal protein S9, chloroplastic, C-terminal antibody

Catalog: PHY3025S

Product Information

Description:	Rabbit polyclonal antibody
Background:	RPS9 is nuclear-encoded ribosomal protein S9, a constituent member of the small subunit of the chloroplast ribosome, in higher plants. RPS9 can bind directly to 16S ribosomal RNA.
Synonyms:	PRPS9, RIBOSOMAL PROTEIN S9, RPS9, SOT8, TWN3
Immunogen:	KLH-conjugated synthetic peptide (18 aa from C terminal section) derived from <i>Arabidopsis thaliana</i> PRS9 (AT1G74970).
Form:	Lyophilized
Quantity:	150 µg
Purification:	Serum Peptide affinity form antibody available upon request at info@phytoab.com .
Reconstitution:	Reconstitution with 150 µl of sterile water. "Note: please spin tube briefly prior to opening it to avoid any losses that might occur from lyophilized material adhering to the cap or sides of the tube".
Stability & Storage:	Use a manual defrost freezer and avoid repeated freeze-thaw cycles. 12 months from date of receipt, -20 to -70°C as supplied. 6 months, -20 to -70°C under sterile conditions after reconstitution. 1 month, 2 to 8°C under sterile conditions after reconstitution.
Shipping:	The product is shipped at 4°C. Upon receipt, store it immediately at the temperature recommended above.

Application Information

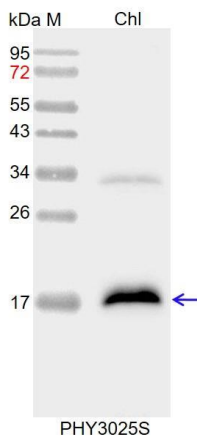
Recommended Dilution:	Western Blot (1:1000-1:5000) Note: Optimal dilutions/concentrations should be determined by the end user.
Expected / apparent MW:	23 / 17 kDa
Confirmed Reactivity:	<i>Arabidopsis thaliana</i>
Predicted Reactivity:	Among species analyzed, the sequence of the synthetic peptide used

Research Use Only

for immunization is 100% homologues with the sequence in *Cucumis sativus*, and 80-99% homologues with the sequence in *Vitis vinifera*, *Brassica rapa*, *Brassica napus*, *Populus trichocarpa*, *Gossypium raimondii*, *Spinacia oleracea*, *Hordeum vulgare*, *Panicum virgatum*, *Glycine max*, *Medicago truncatula*, *Solanum tuberosum*, *Nicotiana tabacum*, *Solanum lycopersicum*, *Physcomitrium patens*, *Setaria viridis*, *Zea mays*, *Sorghum bicolor*, *Oryza sativa*.

For more species homologues information, please contact tech support at tech@phytoab.com.

Application Example



Chl: 10 μ l total chloroplast protein from *Arabidopsis thaliana*.

Electrophoresis: 15% SDS-PAGE

Transfer: blotting to NC (nitrocellulose) membrane for 1 h.

Blocking: 5% skim milk at RT or 4°C for 1 h.

Primary antibody: 1:5000 dilution overnight at 4°C.

Secondary antibody: 1:10000 dilution using Goat Anti-Rabbit IgG &L (HRP) (Cat# PHY6000).

Detection: using chemiluminescence substrate and image were captured with CCD camera.