

Anti-Superoxide dismutase [Fe] 3, chloroplastic, C-terminal antibody

Catalog: PHY2581A

Product Information

Description:	Rabbit polyclonal antibody
Background:	Iron superoxide dismutases (FeSODs; FSDs) are primary antioxidant enzymes in <i>Arabidopsis thaliana</i> chloroplasts. The stromal FSD1 conferred the only detectable FeSOD activity, whereas the thylakoid membrane- and nucleoid-co-localized FSD2 and FSD3 double mutant showed arrested chloroplast development.
Synonyms:	FSD3, FE SUPEROXIDE DISMUTASE 3, SOD3, SUPEROXIDE DISMUTASE 3
Immunogen:	KLH-conjugated synthetic peptide (16 aa from C terminal section) derived from <i>Arabidopsis thaliana</i> FSD3 (AT5G23310).
Form:	Lyophilized
Quantity:	150 µg
Purification:	Immunogen affinity purified
Reconstitution:	Reconstitution with 150 µl of 0.01 M sterile PBS. "Note: please spin tube briefly prior to opening it to avoid any losses that might occur from lyophilized material adhering to the cap or sides of the tube".
Stability & Storage:	Use a manual defrost freezer and avoid repeated freeze-thaw cycles. 12 months from date of receipt, -20 to -70°C as supplied. 6 months, -20 to -70°C under sterile conditions after reconstitution. 1 month, 2 to 8°C under sterile conditions after reconstitution.
Shipping:	The product is shipped at 4°C. Upon receipt, store it immediately at the temperature recommended above.

Application Information

Recommended Dilution:	Western Blot (1:1000-1:2000) Note: Optimal dilutions/concentrations should be determined by the end user.
Expected / apparent MW:	30 kDa

Research Use Only

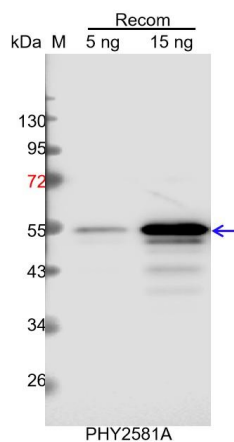
Confirmed Reactivity:

Coming soon

Predicted Reactivity:

Among species analyzed, the sequence of the synthetic peptide used for immunization is 100% homologues with the sequence in *Brassica napus*, *Brassica rapa*, and 80-99% homologues with the sequence in *Hordeum vulgare*, *Oryza sativa*, *Vitis vinifera*, *Populus trichocarpa*, *Gossypium raimondii*, *Panicum virgatum*, *Glycine max*, *Triticum aestivum*, *Zea mays*, *Setaria viridis*, *Nicotiana tabacum*, *Spinacia oleracea*, *Solanum tuberosum*, *Solanum lycopersicum*, *Cucumis sativus*. For more species homologues information, please contact tech support at tech@phytoab.com.

Application Example



Recom: 5 ng and 15 ng recombinant protein containing the peptide for immunization and having a molecular mass of 55 kDa.

Electrophoresis: 12% SDS-PAGE

Transfer: blotting to NC (nitrocellulose) membrane for 1 h.

Blocking: 5% skim milk at RT or 4°C for 1 h.

Primary antibody: 1:1000 dilution overnight at 4°C.

Secondary antibody: 1:10000 dilution using Goat Anti-Rabbit IgG H&L (HRP) (Cat# PHY6000).

Detection: using chemiluminescence substrate and image were captured with CCD camera.