

# Anti-PsbR subunit of Photosystem II antibody

Catalog: PHY2395A

## Product Information

<b>Description:</b>	Rabbit polyclonal antibody
<b>Background:</b>	PsbR is the subunit of photosystem II (PSII) with a molecular mass of 10 kDa. This subunit appears to be involved in the stable assembly of PSII, particularly that of the oxygen-evolving complex subunit PsbP. Mutants defective in accumulation of PsbR have reduced amounts of subunits PsbP and PsbQ in PSII.
<b>Synonyms:</b>	PsbR, Photosystem II 10 kDa polypeptide, chloroplastic, photosystem II subunit R
<b>Immunogen:</b>	KLH-conjugated synthetic peptide (16 aa from C terminal section) derived from <i>Arabidopsis thaliana</i> PsbR (AT1G79040).
<b>Form:</b>	Lyophilized
<b>Quantity:</b>	150 µg
<b>Purification:</b>	Immunogen affinity purified
<b>Reconstitution:</b>	Reconstitution with 150 µl of 0.01 M sterile PBS. "Note: please spin tube briefly prior to opening it to avoid any losses that might occur from lyophilized material adhering to the cap or sides of the tube".
<b>Stability &amp; Storage:</b>	Use a manual defrost freezer and avoid repeated freeze-thaw cycles. 12 months from date of receipt, -20 to -70°C as supplied. 6 months, -20 to -70°C under sterile conditions after reconstitution. 1 month, 2 to 8°C under sterile conditions after reconstitution.
<b>Shipping:</b>	The product is shipped at 4°C. Upon receipt, store it immediately at the temperature recommended above.

## Application Information

<b>Recommended Dilution:</b>	Western Blot (1:1000-1:2000) Note: Optimal dilutions/concentrations should be determined by the end user.
<b>Expected / apparent MW:</b>	15 / 11 kDa
<b>Confirmed Reactivity:</b>	<i>Arabidopsis thaliana</i>

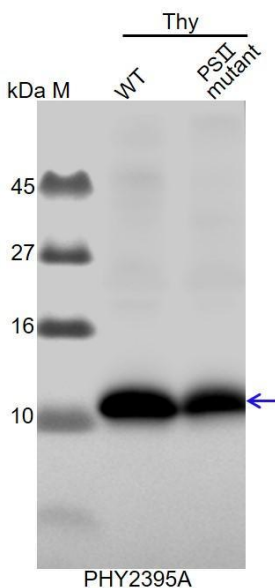
Research Use Only

### Predicted Reactivity:

Among species analyzed, the sequence of the synthetic peptide used for immunization is 100% homologues with the sequence in *Populus trichocarpa*, *Brassica napus*, *Brassica rapa*, *Spinacia oleracea*, *Gossypium raimondii*, *Nicotiana tabacum*, *Solanum lycopersicum*, *Solanum tuberosum*, *Sorghum bicolor*, *Zea mays*, and 80-99% homologues with the sequence in *Glycine max*, *Cucumis sativus*, *Oryza sativa*, *Populus trichocarpa*, *Panicum virgatum*, *Physcomitrium patens*, *Vitis vinifera*, *Medicago truncatula*, *Setaria viridis*, *Triticum aestivum*, *Hordeum vulgare*, *Chlamydomonas reinhardtii*.

For more species homologues information, please contact tech support at [tech@phytoab.com](mailto:tech@phytoab.com).

### Application Example



**Thy-WT:** thylakoid membrane protein from WT of *Arabidopsis thaliana* containing 2 µg of chlorophyll.

**Thy-PSII mutant:** thylakoid membrane protein from PSII mutant of *Arabidopsis thaliana* containing 2 µg of chlorophyll.

**Electrophoresis:** Tricine-SDS-PAGE

**Transfer:** blotting to NC (nitrocellulose) membrane for 1 h.

**Blocking:** 5% skim milk at RT or 4°C for 1 h.

**Primary antibody:** 1:5000 dilution overnight at 4°C.

**Secondary antibody:** 1:10000 dilution using Goat Anti-Rabbit IgG H&L (HRP) (Cat# PHY6000).

**Detection:** using chemiluminescence substrate and image were captured with CCD camera.