

Anti-30S ribosomal protein S17 antibody

Catalog: PHY0415A

Product Information

Description:	Rabbit polyclonal antibody
Background:	RPS17 is one of the primary rRNA binding proteins, it binds specifically to the 5'-end of 16S ribosomal RNA.
Synonyms:	RPS17, CS17, PDE347, PIGMENT DEFECTIVE 347, PLASTID RIBOSOMAL SMALL SUBUNIT PROTEIN 17, PRPS17, RIBOSOMAL PROTEIN S17, RP-S17
Immunogen:	KLH-conjugated synthetic peptide (15 aa from C terminal section) derived from <i>Arabidopsis thaliana</i> RPS17 (AT1G79850).
Form:	Lyophilized
Quantity:	150 µg
Purification:	Immunogen affinity purified
Reconstitution:	Reconstitution with 150 µl of 0.01 M sterile PBS. "Note: please spin tube briefly prior to opening it to avoid any losses that might occur from lyophilized material adhering to the cap or sides of the tube".
Stability & Storage:	Use a manual defrost freezer and avoid repeated freeze-thaw cycles. 12 months from date of receipt, -20 to -70°C as supplied. 6 months, -20 to -70°C under sterile conditions after reconstitution. 1 month, 2 to 8°C under sterile conditions after reconstitution.
Shipping:	The product is shipped at 4°C. Upon receipt, store it immediately at the temperature recommended above.

Application Information

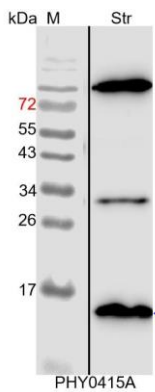
Recommended Dilution:	Western Blot (1:1000-1:2000) Note: Optimal dilutions/concentrations should be determined by the end user.
Expected / apparent MW:	16 kDa
Confirmed Reactivity:	<i>Arabidopsis thaliana</i>
Predicted Reactivity:	Among species analyzed, the sequence of the synthetic peptide used for immunization is 100% homologues with the sequence in <i>Oryza sativa Japonica Group</i> , <i>Vitis vinifera</i> , <i>Glycine max</i> , <i>Spinacia oleracea</i> ,

Research Use Only

Sorghum bicolor, *Triticum aestivum*, *Hordeum vulgare*, *Panicum virgatum*, *Zea mays*, and 80-99% homologues with the sequence in *Populus trichocarpa*, *Setaria viridis*, *Gossypium raimondii*, *Cucumis sativus*, *Brassica rapa*, *Brassica napus*, *Medicago truncatula*, *Setaria viridis*, *Nicotiana tabacum*, *Solanum lycopersicum*, *Solanum tuberosum*.

For more species homologues information, please contact tech support at tech@phytoab.com.

Application Example



Str: 15 μ g stromal protein from *Arabidopsis thaliana*.

Electrophoresis: 15% SDS-PAGE

Transfer: blotting to NC (nitrocellulose) membrane for 1 h.

Blocking: 5% skim milk at RT or 4°C for 1 h.

Primary antibody: 1:2000 dilution overnight at 4°C.

Secondary antibody: 1:10000 dilution using Goat Anti-Rabbit IgG H&L(HRP) (Cat# PHY6000).

Detection: using chemiluminescence substrate and image were captured with CCD camera.