

Anti-Cyclin-dependent kinase D-3, C-terminal antibody

Catalog: PHY1422S

Product Information

Description:	Rabbit polyclonal antibody
Background:	Plants possess two types of CAKs, CDKD and CDKF, both of which exhibit CDK-activating kinase activities in vitro and in yeast cells. CDKD is closely related to vertebrate-type CAKs in terms of amino acid sequence similarity and enzyme activity; In Arabidopsis, there is three CDKDs:CDKD;1 (AT1G73690), CDKD;2 (AT1G66750), CDKD;3 (AT1G18040).
Synonyms:	CAK2At , AT;CDCKD;3, CAK2AT, CDKD1;3, CYCLIN-DEPENDENT KINASE D1;3
Immunogen:	KLH-conjugated synthetic peptide (12 aa from C terminal section) derived from <i>Arabidopsis thaliana</i> CAK2At (AT1G18040).
Form:	Lyophilized
Quantity:	150 µg
Purification:	Serum Peptide affinity form antibody available upon request at info@phytoab.com .
Reconstitution:	Reconstitution with 150 µl of sterile water. "Note: please spin tube briefly prior to opening it to avoid any losses that might occur from lyophilized material adhering to the cap or sides of the tube".
Stability &	Use a manual defrost freezer and avoid repeated freeze-thaw cycles.
Storage:	12 months from date of receipt, -20 to -70°C as supplied. 6 months, -20 to -70°C under sterile conditions after reconstitution. 1 month, 2 to 8°C under sterile conditions after reconstitution.
Shipping:	The product is shipped at 4°C. Upon receipt, store it immediately at the temperature recommended above.

Application Information

Recommended Dilution:	Western Blot (1:1000-1:2000) Note: Optimal dilutions/concentrations should be determined by the end user.
Expected / apparent MW:	45 kDa

Research Use Only

Confirmed Reactivity:

Arabidopsis thaliana

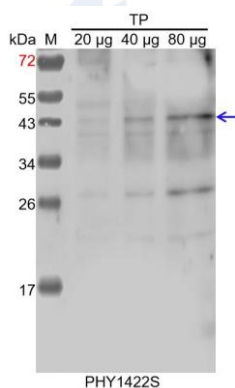
Predicted Reactivity:

Among species analyzed, the sequence of the synthetic peptide used for immunization is 100% homologues with the sequence in *Solanum tuberosum*, *Cucumis sativus*, *Populus trichocarpa*, *Medicago truncatula*, *Nicotiana tabacum*, *Gossypium raimondii*, *Brassica napus*, and 80-99% homologues with the sequence in *Spinacia oleracea*, *Solanum lycopersicum*, *Brassica rapa*, *Glycine max*, *Vitis vinifera*, *Panicum virgatum*, *Setaria viridis*.

The sequence of the synthetic peptide used for immunization is 100% homologues with the sequence in CDKD1;1 (AT1G73690).

For more species homologues information, please contact tech support at tech@phytoab.com.

Application Example



TP: 20 µg, 40 µg and 80 µg total protein from *Arabidopsis thaliana*, respectively.

Electrophoresis: 15% SDS-Urea-PAGE

Transfer: blotting to NC (nitrocellulose) membrane for 1 h.

Blocking: 5% skim milk at RT or 4°C for 1 h.

Primary antibody: 1:1000 dilution overnight at 4°C.

Secondary antibody: 1:10000 dilution using Goat Anti-Rabbit IgG H&L(HRP) (Cat# PHY6000).

Detection: using chemiluminescence substrate and image were captured with CCD camera.