

Anti-High Chlorophyll Fluorescence 173 antibody

Catalog: PHY0326

Product Information

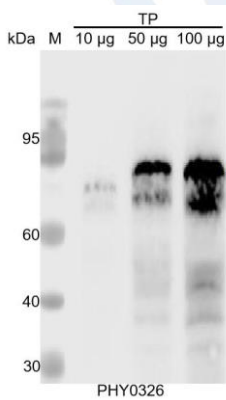
Description:	Rabbit polyclonal antibody
Background:	HCF173 is localized in the chloroplast thylakoid membrane and is involved in the initiation of translation of the psbA mRNA. Mutants without HCF173 show high chlorophyll fluorescence phenotype and are severely affected in the accumulation of PSII subunits.
Synonyms:	HCF173
Immunogen:	Recombinant Mature HCF173 protein without chloroplast targeting peptide derived from <i>Arabidopsis thaliana</i> AT1G16720.
Form:	Lyophilized
Quantity:	150 µg
Purification:	Protein A purified
Reconstitution:	Reconstitution with 150 µl of 0.01 M sterile PBS. "Note: please spin tube briefly prior to opening it to avoid any losses that might occur from lyophilized material adhering to the cap or sides of the tube".
Stability & Storage:	Use a manual defrost freezer and avoid repeated freeze-thaw cycles. 12 months from date of receipt, -20 to -70°C as supplied. 6 months, -20 to -70°C under sterile conditions after reconstitution. 1 month, 2 to 8°C under sterile conditions after reconstitution.
Shipping:	The product is shipped at 4°C. Upon receipt, store it immediately at the temperature recommended above.

Application Information

Recommended Dilution:	Western Blot (1:1000-1:2000) Note: Optimal dilutions/concentrations should be determined by the end user.
Expected / apparent MW:	66 kDa
Confirmed Reactivity:	<i>Arabidopsis thaliana</i>
Predicted Reactivity:	For more species homologues information, please contact tech support at tech@phytoab.com .

Research Use Only

Application Example



TP: 10 µg, 50 µg and 100 µg total protein from *Arabidopsis thaliana*, respectively.

Electrophoresis: 15% SDS-Urea-PAGE

Transfer: blotting to NC (nitrocellulose) membrane for 1 h.

Blocking: 5% skim milk at RT or 4°C for 1 h.

Primary antibody: 1:1000 dilution overnight at 4°C.

Secondary antibody: 1:10000 dilution using Goat Anti-Rabbit IgG H&L (HRP) (Cat# PHY6000).

Detection: using chemiluminescence substrate and image were captured with CCD camera.