

Anti-Phytochrome B antibody

Catalog: PHY1733

Product Information

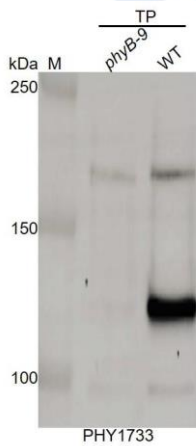
| | |
|---------------------------------|---|
| Description: | Mouse monoclonal (Clone: 10P5) antibody |
| Background: | PHYB is a red/far-red photoreceptor involved in the regulation of de-etiolation. It exists in two inter-convertible forms: Pr and Pfr (active). It is involved in the light-promotion of seed germination and in the shade avoidance response. |
| Synonyms: | PHYB, HY3, OOP1, OUT OF PHASE 1, PHYTOCHROME B |
| Immunogen: | Recombinant protein of PHYB (900-1172 aa) derived from <i>Arabidopsis thaliana</i> AT2G18790. |
| Form: | Lyophilized |
| Quantity: | 150 µg |
| Purification: | Protein A purified |
| Reconstitution: | Reconstitution with 150 µl of 0.01M sterile PBS. "Note: please spin tube briefly prior to opening it to avoid any losses that might occur from lyophilized material adhering to the cap or sides of the tube". |
| Stability & Storage: | Use a manual defrost freezer and avoid repeated freeze-thaw cycles. 12 months from date of receipt, -20 to -70°C as supplied. 6 months, -20 to -70°C under sterile conditions after reconstitution. 1 month, 2 to 8°C under sterile conditions after reconstitution. |
| Shipping: | The product is shipped at 4°C. Upon receipt, store it immediately at the temperature recommended above. |

Application Information

| | |
|--------------------------------|--|
| Recommended Dilution: | Western Blot (1:1000-1:2000) Note: Optimal dilutions/concentrations should be determined by the end user. |
| Expected / apparent MW: | 125 kDa |
| Confirmed Reactivity: | <i>Arabidopsis thaliana</i> |
| Predicted Reactivity: | For more species homologues information, please contact tech support at tech@phytoab.com . |

Research Use Only

Application Example



TP-*phyB-9*: 35 µg total protein from *phyB-9* mutant of *Arabidopsis thaliana*.

TP-WT: 35 µg total protein from *Arabidopsis thaliana*.

Electrophoresis: 8% SDS-Urea-PAGE

Transfer: blotting to NC (nitrocellulose) membrane for 1 h.

Blocking: 5% skim milk at RT or 4°C for 1 h.

Primary antibody: 1:1000 dilution overnight at 4°C.

Secondary antibody: 1:5000 dilution using Goat Anti-Mouse IgG H&L (HRP) (Cat# PHY6006).

Detection: using chemiluminescence substrate and image were captured with CCD camera.